

# SENP8 Antibody - middle region

Rabbit Polyclonal Antibody

Catalog # AI16071

## Product Information

---

Application	WB
Primary Accession	<a href="#">Q96LD8</a>
Other Accession	<a href="#">XP_005254214</a>
Reactivity	Human
Host	Rabbit
Clonality	Polyclonal
Calculated MW	24107

## Additional Information

---

Gene ID	123228
Alias Symbol Other Names	SENP8, DEN1, NEDP1, PRSC2, FKSG8, Sentrin-specific protease 8, 3.4.22.68, Deneddylase-1, NEDD8-specific protease 1, Protease, cysteine 2, Sentrin/SUMO-specific protease SENP8, SENP8, DEN1, NEDP1, PRSC2
Format	Liquid. Purified antibody supplied in 1x PBS buffer with 0.09% (w/v) sodium azide and 2% sucrose.
Reconstitution & Storage	Add 50 µl of distilled water. Final Anti-SENP8 antibody concentration is 1 mg/ml in PBS buffer with 2% sucrose. For longer periods of storage, store at -20°C. Avoid repeat freeze-thaw cycles.
Precautions	SENP8 Antibody - middle region is for research use only and not for use in diagnostic or therapeutic procedures.

## Protein Information

---

Name	SENP8
Synonyms	DEN1, NEDP1, PRSC2
Function	Protease that catalyzes two essential functions in the NEDD8 pathway: processing of full-length NEDD8 to its mature form and deconjugation of NEDD8 from targeted proteins such as cullins or p53.
Tissue Location	Broadly expressed, with highest levels in kidney and pancreas.

## Background

---

Protease that catalyzes two essential functions in the NEDD8 pathway: processing of full-length NEDD8 to its mature form and deconjugation of NEDD8 from targeted proteins such as cullins or p53.

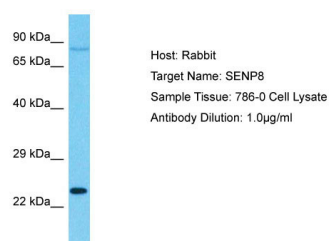
## References

---

Mendoza H.M.,et al.J. Biol. Chem. 278:25637-25643(2003).  
Gong L.,et al.Submitted (SEP-2000) to the EMBL/GenBank/DDBJ databases.  
Wang Y.-G.,et al.Submitted (SEP-2000) to the EMBL/GenBank/DDBJ databases.  
Wu K.,et al.J. Biol. Chem. 278:28882-28891(2003).  
Gan-Erdene T.,et al.J. Biol. Chem. 278:28892-28900(2003).

## Images

---



Host: Rabbit  
Target Name: SENP8  
Sample Tissue: 786-O Whole cell lysate  
S  
Antibody Dilution: 1.0µg/ml

Please note: All products are 'FOR RESEARCH USE ONLY. NOT FOR USE IN DIAGNOSTIC OR THERAPEUTIC PROCEDURES'.