

# RINT1 Antibody - N-terminal region

Rabbit Polyclonal Antibody

Catalog # AI16076

## Product Information

---

<b>Application</b>	WB
<b>Primary Accession</b>	<a href="#">Q6NUQ1</a>
<b>Other Accession</b>	<a href="#">NM_021930</a> , <a href="#">NP_068749</a>
<b>Reactivity</b>	Human, Rat, Guinea Pig, Horse
<b>Predicted</b>	Human, Rat, Pig, Guinea Pig, Horse
<b>Host</b>	Rabbit
<b>Clonality</b>	Polyclonal
<b>Calculated MW</b>	90632

## Additional Information

---

<b>Gene ID</b>	60561
<b>Alias Symbol</b>	RINT-1
<b>Other Names</b>	RAD50-interacting protein 1, RAD50 interactor 1, HsRINT-1, RINT-1, RINT1
<b>Format</b>	Liquid. Purified antibody supplied in 1x PBS buffer with 0.09% (w/v) sodium azide and 2% sucrose.
<b>Reconstitution &amp; Storage</b>	Add 50 &mu; l of distilled water. Final Anti-RINT1 antibody concentration is 1 mg/ml in PBS buffer with 2% sucrose. For longer periods of storage, store at -20°C. Avoid repeat freeze-thaw cycles.
<b>Precautions</b>	RINT1 Antibody - N-terminal region is for research use only and not for use in diagnostic or therapeutic procedures.

## Protein Information

---

<b>Name</b>	RINT1
<b>Function</b>	Involved in regulation of membrane traffic between the Golgi and the endoplasmic reticulum (ER); the function is proposed to depend on its association in the NRZ complex which is believed to play a role in SNARE assembly at the ER. May play a role in cell cycle checkpoint control (PubMed: <a href="#">11096100</a> ). Essential for telomere length control (PubMed: <a href="#">16600870</a> ).
<b>Cellular Location</b>	Cytoplasm. Endoplasmic reticulum membrane; Peripheral membrane protein

## Background

---

Involved in regulation of membrane traffic between the Golgi and the endoplasmic reticulum. May play a role in cell cycle checkpoint control. Essential for telomere length control.

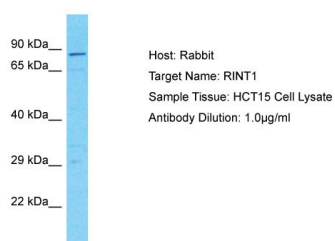
## References

---

Xiao J.,et al.J. Biol. Chem. 276:6105-6111(2001).  
Hillier L.W.,et al.Nature 424:157-164(2003).  
Ota T.,et al.Nat. Genet. 36:40-45(2004).  
Hirose H.,et al.EMBO J. 23:1267-1278(2004).  
Nakajima K.,et al.EMBO J. 23:3216-3226(2004).

## Images

---



Host: Rabbit  
Target Name: RINT1  
Sample Tissue: HCT15 Whole cell lysate  
S  
Antibody Dilution: 1.0µg/ml

Please note: All products are 'FOR RESEARCH USE ONLY. NOT FOR USE IN DIAGNOSTIC OR THERAPEUTIC PROCEDURES'.