

NUDCD2 Antibody - C-terminal region

Rabbit Polyclonal Antibody

Catalog # AI16080

Product Information

Application	WB
Primary Accession	Q8WVJ2
Other Accession	NP_660309
Reactivity	Human
Host	Rabbit
Clonality	Polyclonal
Calculated MW	17676

Additional Information

Gene ID	134492
Alias Symbol Other Names	NUDCD2, NudC domain-containing protein 2, NUDCD2
Format	Liquid. Purified antibody supplied in 1x PBS buffer with 0.09% (w/v) sodium azide and 2% sucrose.
Reconstitution & Storage	Add 50 μ l of distilled water. Final Anti-NUDCD2 antibody concentration is 1 mg/ml in PBS buffer with 2% sucrose. For longer periods of storage, store at -20°C. Avoid repeat freeze-thaw cycles.
Precautions	NUDCD2 Antibody - C-terminal region is for research use only and not for use in diagnostic or therapeutic procedures.

Protein Information

Name	NUDCD2
Function	May regulate the LIS1/dynein pathway by stabilizing LIS1 with Hsp90 chaperone.
Cellular Location	Chromosome, centromere, kinetochore. Cytoplasm, cytoskeleton, microtubule organizing center, centrosome. Cytoplasm, cytoskeleton, spindle pole Note=Associates with centrosomes in interphase and to spindle poles and kinetochores during mitosis

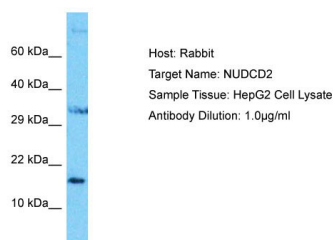
Background

May regulate the LIS1/dynein pathway by stabilizing LIS1 with Hsp90 chaperone.

References

Yang Y.,et al.Proc. Natl. Acad. Sci. U.S.A. 107:3499-3504(2010).
Ota T.,et al.Nat. Genet. 36:40-45(2004).
Bechtel S.,et al.BMC Genomics 8:399-399(2007).
Mural R.J.,et al.Submitted (SEP-2005) to the EMBL/GenBank/DDBJ databases.
Burkard T.R.,et al.BMC Syst. Biol. 5:17-17(2011).

Images



Host: Rabbit
Target Name: NUDCD2
Sample Tissue: HepG2 Whole cell lysate
S
Antibody Dilution: 1.0µg/ml

Please note: All products are 'FOR RESEARCH USE ONLY. NOT FOR USE IN DIAGNOSTIC OR THERAPEUTIC PROCEDURES'.