

PPIP5K1 Antibody - C-terminal region

Rabbit Polyclonal Antibody

Catalog # AI16084

Product Information

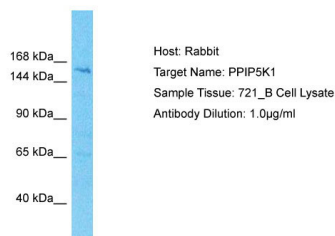
Application	WB
Primary Accession	Q6PFW1-2
Reactivity	Human
Host	Rabbit
Clonality	Polyclonal
Calculated MW	157 KDa

Additional Information

Alias Symbol	PPIP5K1, HISPPD2A, IP6K, IPS1, KIAA0377, VIP1,
Format	Liquid. Purified antibody supplied in 1x PBS buffer with 0.09% (w/v) sodium azide and 2% sucrose.
Reconstitution & Storage	Add 50 μ l of distilled water. Final Anti-PPIP5K1 antibody concentration is 1 mg/ml in PBS buffer with 2% sucrose. For longer periods of storage, store at -20°C. Avoid repeat freeze-thaw cycles.
Precautions	PPIP5K1 Antibody - C-terminal region is for research use only and not for use in diagnostic or therapeutic procedures.

Protein Information

Images



Host: Rabbit
Target Name: PPIP5K1
Sample Tissue: 721_B Whole cell lysate
S
Antibody Dilution: 1.0 μ g/ml

Please note: All products are 'FOR RESEARCH USE ONLY. NOT FOR USE IN DIAGNOSTIC OR THERAPEUTIC PROCEDURES'.