

CDC37 Antibody - middle region

Rabbit Polyclonal Antibody

Catalog # AI16087

Product Information

Application	WB
Primary Accession	Q16543
Other Accession	NP_008996
Reactivity	Human
Host	Rabbit
Clonality	Polyclonal
Calculated MW	44468

Additional Information

Gene ID	11140
Alias Symbol Other Names	CDC37, CDC37A, Hsp90 co-chaperone Cdc37, Hsp90 chaperone protein kinase-targeting subunit, p50Cdc37, Hsp90 co-chaperone Cdc37, N-terminally processed, CDC37, CDC37A
Format	Liquid. Purified antibody supplied in 1x PBS buffer with 0.09% (w/v) sodium azide and 2% sucrose.
Reconstitution & Storage	Add 50 µl of distilled water. Final Anti-CDC37 antibody concentration is 1 mg/ml in PBS buffer with 2% sucrose. For longer periods of storage, store at -20°C. Avoid repeat freeze-thaw cycles.
Precautions	CDC37 Antibody - middle region is for research use only and not for use in diagnostic or therapeutic procedures.

Protein Information

Name	CDC37
Synonyms	CDC37A
Function	Co-chaperone that binds to numerous kinases and promotes their interaction with the Hsp90 complex, resulting in stabilization and promotion of their activity (PubMed: 8666233). Inhibits HSP90AA1 ATPase activity (PubMed: 23569206).
Cellular Location	Cytoplasm.

Background

Co-chaperone that binds to numerous kinases and promotes their interaction with the Hsp90 complex, resulting in stabilization and promotion of their activity.

References

Stepanova L.,et al.Genes Dev. 10:1491-1502(1996).

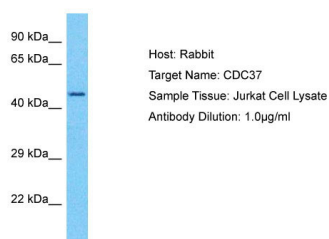
Dai K.,et al.J. Biol. Chem. 271:22030-22034(1996).

Kalnina N.,et al.Submitted (MAY-2003) to the EMBL/GenBank/DDBJ databases.

Mural R.J.,et al.Submitted (JUL-2005) to the EMBL/GenBank/DDBJ databases.

Lamphere L.,et al.Oncogene 14:1999-2004(1997).

Images



Host: Rabbit
Target Name: CDC37
Sample Tissue: Jurkat Whole Cell lysates
Antibody Dilution: 1.0µg/ml

Please note: All products are 'FOR RESEARCH USE ONLY. NOT FOR USE IN DIAGNOSTIC OR THERAPEUTIC PROCEDURES'.