

CD6 Antibody - C-terminal region

Rabbit Polyclonal Antibody

Catalog # AI16097

Product Information

Application	WB
Primary Accession	P30203
Other Accession	NP_006716
Reactivity	Human
Host	Rabbit
Clonality	Polyclonal
Calculated MW	71801

Additional Information

Gene ID	923
Alias Symbol Other Names	CD6, T-cell differentiation antigen CD6, T12, TP120, CD6, CD6
Format	Liquid. Purified antibody supplied in 1x PBS buffer with 0.09% (w/v) sodium azide and 2% sucrose.
Reconstitution & Storage	Add 50 μ l of distilled water. Final Anti-CD6 antibody concentration is 1 mg/ml in PBS buffer with 2% sucrose. For longer periods of storage, store at -20°C. Avoid repeat freeze-thaw cycles.
Precautions	CD6 Antibody - C-terminal region is for research use only and not for use in diagnostic or therapeutic procedures.

Protein Information

Name	CD6 (HGNC:1691)
Function	Cell adhesion molecule that mediates cell-cell contacts and regulates T-cell responses via its interaction with ALCAM/CD166 (PubMed: 15048703 , PubMed: 15294938 , PubMed: 16352806 , PubMed: 16914752 , PubMed: 24584089 , PubMed: 24945728). Contributes to signaling cascades triggered by activation of the TCR/CD3 complex (PubMed: 24584089). Functions as a costimulatory molecule; promotes T-cell activation and proliferation (PubMed: 15294938 , PubMed: 16352806 , PubMed: 16914752). Contributes to the formation and maturation of the immunological synapse (PubMed: 15294938 , PubMed: 16352806). Functions as a calcium- dependent pattern receptor that binds and aggregates both Gram-positive and Gram-negative bacteria. Binds both lipopolysaccharide (LPS) from Gram-negative bacteria and lipoteichoic acid from Gram-positive bacteria

(PubMed:[17601777](#)). LPS binding leads to the activation of signaling cascades and down-stream MAP kinases (PubMed:[17601777](#)). Mediates activation of the inflammatory response and the secretion of pro-inflammatory cytokines in response to LPS (PubMed:[17601777](#)).

Cellular Location

Cell membrane; Single-pass type I membrane protein. Note=Detected at the immunological synapse, i.e, at the contact zone between antigen-presenting dendritic cells and T-cells (PubMed:15294938, PubMed:16352806). Colocalizes with the TCR/CD3 complex at the immunological synapse (PubMed:15294938)

Tissue Location

Detected on thymocytes (PubMed:15294938). Detected on peripheral blood T-cells (PubMed:15048703, PubMed:16352806) Detected on natural killer (NK) cells (PubMed:16352806). Soluble CD6 is detected in blood serum (at protein level) (PubMed:17601777). Detected in spleen, thymus, appendix, lymph node and peripheral blood leukocytes (PubMed:9013954). Expressed by thymocytes, mature T-cells, a subset of B-cells known as B-1 cells, and by some cells in the brain

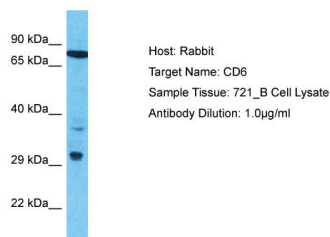
Background

Involved in cell adhesion. Binds to CD166.

References

Bowen M.A.,et al.J. Immunol. 158:1149-1156(1997).
Taylor T.D.,et al.Nature 440:497-500(2006).
Aruffo A.,et al.J. Exp. Med. 174:949-952(1991).
Castro M.A.,et al.J. Immunol. 178:4351-4361(2007).
Swack J.A.,et al.J. Biol. Chem. 266:7137-7143(1991).

Images



Host: Rabbit
Target Name: CD6
Sample Tissue: 721_B Whole Cell lysates
Antibody Dilution: 1.0µg/ml

Please note: All products are 'FOR RESEARCH USE ONLY. NOT FOR USE IN DIAGNOSTIC OR THERAPEUTIC PROCEDURES'.