

CXCR5 Antibody - N-terminal region

Rabbit Polyclonal Antibody

Catalog # AI16099

Product Information

Application	WB
Primary Accession	P32302
Reactivity	Human
Host	Rabbit
Clonality	Polyclonal
Calculated MW	41955

Additional Information

Gene ID	643
Alias Symbol Other Names	CXCR5, BLR1, MDR15, C-X-C chemokine receptor type 5, CXC-R5, CXCR-5, Burkitt lymphoma receptor 1, Monocyte-derived receptor 15, MDR-15, CD185, CXCR5, BLR1, MDR15
Format	Liquid. Purified antibody supplied in 1x PBS buffer with 0.09% (w/v) sodium azide and 2% sucrose.
Reconstitution & Storage	Add 50 μ l of distilled water. Final Anti-CXCR5 antibody concentration is 1 mg/ml in PBS buffer with 2% sucrose. For longer periods of storage, store at -20°C. Avoid repeat freeze-thaw cycles.
Precautions	CXCR5 Antibody - N-terminal region is for research use only and not for use in diagnostic or therapeutic procedures.

Protein Information

Name	CXCR5
Synonyms	BLR1, MDR15
Function	Cytokine receptor that binds to B-lymphocyte chemoattractant (BLC). Involved in B-cell migration into B-cell follicles of spleen and Peyer patches but not into those of mesenteric or peripheral lymph nodes. May have a regulatory function in Burkitt lymphoma (BL) lymphomagenesis and/or B-cell differentiation.
Cellular Location	Cell membrane; Multi-pass membrane protein.
Tissue Location	Expression in mature B-cells and Burkitt lymphoma cells

Background

Cytokine receptor that binds to B-lymphocyte chemoattractant (BLC). Involved in B-cell migration into B-cell follicles of spleen and Peyer patches but not into those of mesenteric or peripheral lymph nodes. May have a regulatory function in Burkitt lymphoma (BL) lymphomagenesis and/or B-cell differentiation.

References

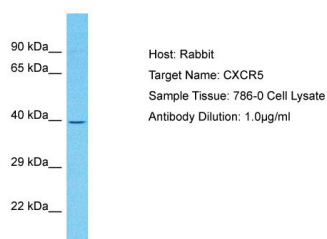
Dobner T.,et al.Eur. J. Immunol. 22:2795-2799(1992).

Barella L.,et al.Biochem. J. 309:773-779(1995).

Legler D.F.,et al.J. Exp. Med. 187:655-660(1998).

Sjoebloom T.,et al.Science 314:268-274(2006).

Images



Host: Rabbit
Target Name: CXCR5
Sample Tissue: 786-0 Cell Lysate
Antibody Dilution: 1.0µg/ml

Host: Rabbit
Target Name: CXCR5
Sample Tissue: 786-0 Whole cell lysate
S
Antibody Dilution: 1.0µg/ml

Please note: All products are 'FOR RESEARCH USE ONLY. NOT FOR USE IN DIAGNOSTIC OR THERAPEUTIC PROCEDURES'.