

# ELP4 Antibody - C-terminal region

Rabbit Polyclonal Antibody

Catalog # AI16101

## Product Information

---

Application	WB
Primary Accession	<a href="#">Q96EB1</a>
Other Accession	<a href="#">NP_061913</a>
Reactivity	Human
Host	Rabbit
Clonality	Polyclonal
Calculated MW	46588

## Additional Information

---

Gene ID	26610
Alias Symbol Other Names	ELP4, C11orf19, PAXNEB, Elongator complex protein 4, hELP4, PAX6 neighbor gene protein, ELP4, C11orf19, PAXNEB
Format	Liquid. Purified antibody supplied in 1x PBS buffer with 0.09% (w/v) sodium azide and 2% sucrose.
Reconstitution & Storage	Add 50 $\mu$ l of distilled water. Final Anti-ELP4 antibody concentration is 1 mg/ml in PBS buffer with 2% sucrose. For longer periods of storage, store at -20°C. Avoid repeat freeze-thaw cycles.
Precautions	ELP4 Antibody - C-terminal region is for research use only and not for use in diagnostic or therapeutic procedures.

## Protein Information

---

Name	ELP4
Synonyms	C11orf19, PAXNEB
Function	Component of the elongator complex which is required for multiple tRNA modifications, including mcm5U (5-methoxycarbonylmethyl uridine), mcm5s2U (5-methoxycarbonylmethyl-2-thiouridine), and ncm5U (5-carbamoylmethyl uridine) (PubMed: <a href="#">29332244</a> ). The elongator complex catalyzes the formation of carboxymethyluridine in the wobble base at position 34 in tRNAs (PubMed: <a href="#">29332244</a> ).
Cellular Location	Cytoplasm. Nucleus

## Tissue Location

Widely expressed..

## Background

---

Acts as subunit of the RNA polymerase II elongator complex, which is a histone acetyltransferase component of the RNA polymerase II (Pol II) holoenzyme and is involved in transcriptional elongation. Elongator may play a role in chromatin remodeling and is involved in acetylation of histones H3 and probably H4.

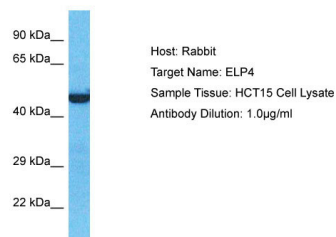
## References

---

Wiemann S.,et al.Genome Res. 11:422-435(2001).  
Ota T.,et al.Nat. Genet. 36:40-45(2004).  
Taylor T.D.,et al.Nature 440:497-500(2006).  
Kleinjan D.A.,et al.Mamm. Genome 13:102-107(2002).  
Hawkes N.A.,et al.J. Biol. Chem. 277:3047-3052(2002).

## Images

---



Host: Rabbit  
Target Name: ELP4  
Sample Tissue: HCT15 Whole cell lysate  
S  
Antibody Dilution: 1.0µg/ml

Please note: All products are 'FOR RESEARCH USE ONLY. NOT FOR USE IN DIAGNOSTIC OR THERAPEUTIC PROCEDURES'.