

E41L3 Antibody - N-terminal region

Rabbit Polyclonal Antibody

Catalog # AI16106

Product Information

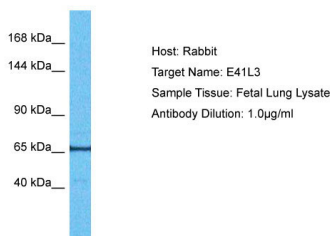
Application	WB
Primary Accession	Q9Y2J2-3
Reactivity	Human
Host	Rabbit
Clonality	Polyclonal
Calculated MW	67 kDa

Additional Information

Alias Symbol	EPB41L3, DAL1, KIAA0987,
Format	Liquid. Purified antibody supplied in 1x PBS buffer with 0.09% (w/v) sodium azide and 2% sucrose.
Reconstitution & Storage	Add 50 μ l of distilled water. Final Anti-E41L3 antibody concentration is 1 mg/ml in PBS buffer with 2% sucrose. For longer periods of storage, store at -20°C. Avoid repeat freeze-thaw cycles.
Precautions	E41L3 Antibody - N-terminal region is for research use only and not for use in diagnostic or therapeutic procedures.

Protein Information

Images



Host: Rabbit
Target Name: E41L3
Sample Tissue: Fetal Lung lysates
Antibody Dilution: 1.0 μ g/ml

Please note: All products are 'FOR RESEARCH USE ONLY. NOT FOR USE IN DIAGNOSTIC OR THERAPEUTIC PROCEDURES'.