

# NFYC Antibody - C-terminal region

Rabbit Polyclonal Antibody  
Catalog # AI16112

## Product Information

---

<b>Application</b>	WB
<b>Primary Accession</b>	<a href="#">Q13952</a>
<b>Reactivity</b>	Human
<b>Host</b>	Rabbit
<b>Clonality</b>	Polyclonal
<b>Calculated MW</b>	50302

## Additional Information

---

<b>Gene ID</b>	4802
<b>Alias Symbol Other Names</b>	NFYC, Nuclear transcription factor Y subunit gamma, CAAT box DNA-binding protein subunit C, Nuclear transcription factor Y subunit C, NF-YC, Transactivator HSM-1/2, NFYC
<b>Format</b>	Liquid. Purified antibody supplied in 1x PBS buffer with 0.09% (w/v) sodium azide and 2% sucrose.
<b>Reconstitution &amp; Storage</b>	Add 50 $\mu$ l of distilled water. Final Anti-NFYC antibody concentration is 1 mg/ml in PBS buffer with 2% sucrose. For longer periods of storage, store at -20°C. Avoid repeat freeze-thaw cycles.
<b>Precautions</b>	NFYC Antibody - C-terminal region is for research use only and not for use in diagnostic or therapeutic procedures.

## Protein Information

---

<b>Name</b>	NFYC
<b>Function</b>	Component of the sequence-specific heterotrimeric transcription factor (NF-Y) which specifically recognizes a 5'-CCAAT-3' box motif found in the promoters of its target genes. NF-Y can function as both an activator and a repressor, depending on its interacting cofactors.
<b>Cellular Location</b>	Nucleus.

## Background

---

Component of the sequence-specific heterotrimeric transcription factor (NF-Y) which specifically recognizes

a 5'- CCAAT-3' box motif found in the promoters of its target genes. NF- Y can function as both an activator and a repressor, depending on its interacting cofactors.

## References

---

Nakshatri H.,et al.J. Biol. Chem. 271:28784-28791(1996).

Bellorini M.,et al.Gene 193:119-125(1997).

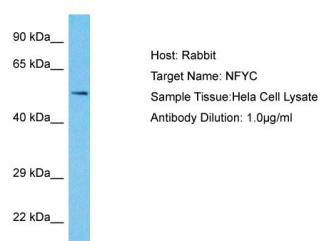
Dmitrenko V.V.,et al.Gene 197:161-163(1997).

Taira T.,et al.J. Biol. Chem. 274:24270-24279(1999).

Bringuier P.P.,et al.Submitted (OCT-1999) to the EMBL/GenBank/DDBJ databases.

## Images

---



Host: Rabbit  
Target Name: NFYC  
Sample Tissue: Hela Whole Cell lysates  
Antibody Dilution: 1.0µg/ml

Please note: All products are 'FOR RESEARCH USE ONLY. NOT FOR USE IN DIAGNOSTIC OR THERAPEUTIC PROCEDURES'.