

# PDE7B Antibody - C-terminal region

Rabbit Polyclonal Antibody

Catalog # AI16115

## Product Information

Application	WB
Primary Accession	<a href="#">Q9NP56</a>
Other Accession	<a href="#">NP_061818</a>
Reactivity	Human
Host	Rabbit
Clonality	Polyclonal
Calculated MW	51835

## Additional Information

Gene ID	27115
Alias Symbol Other Names	PDE7B, cAMP-specific 3', 5'-cyclic phosphodiesterase 7B, 3.1.4.53, PDE7B
Format	Liquid. Purified antibody supplied in 1x PBS buffer with 0.09% (w/v) sodium azide and 2% sucrose.
Reconstitution & Storage	Add 50 $\mu$ l of distilled water. Final Anti-PDE7B antibody concentration is 1 mg/ml in PBS buffer with 2% sucrose. For longer periods of storage, store at -20°C. Avoid repeat freeze-thaw cycles.
Precautions	PDE7B Antibody - C-terminal region is for research use only and not for use in diagnostic or therapeutic procedures.

## Protein Information

Name	PDE7B {ECO:0000303   PubMed:10814504}
Function	Hydrolyzes the second messenger cAMP, which is a key regulator of many important physiological processes (PubMed: <a href="#">10814504</a> , PubMed: <a href="#">10872825</a> ). May be involved in the control of cAMP-mediated neural activity and cAMP metabolism in the brain (PubMed: <a href="#">10814504</a> ).
Tissue Location	Highly expressed in brain (PubMed:10814504). Also expressed in heart, liver, skeletal muscle and pancreas (PubMed:10814504).

## Background

Hydrolyzes the second messenger cAMP, which is a key regulator of many important physiological

processes. May be involved in the control of cAMP-mediated neural activity and cAMP metabolism in the brain.

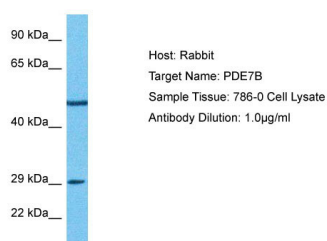
## References

---

Sasaki T.,et al.Biochem. Biophys. Res. Commun. 271:575-583(2000).  
Gardner C.E.,et al.Biochem. Biophys. Res. Commun. 272:186-192(2000).  
Mungall A.J.,et al.Nature 425:805-811(2003).  
Mural R.J.,et al.Submitted (SEP-2005) to the EMBL/GenBank/DDBJ databases.  
Mayya V.,et al.Sci. Signal. 2:RA46-RA46(2009).

## Images

---



Host: Rabbit  
Target Name: PDE7B  
Sample Tissue: 786-O Whole Cell lysates  
Antibody Dilution: 1.0µg/ml

Please note: All products are 'FOR RESEARCH USE ONLY. NOT FOR USE IN DIAGNOSTIC OR THERAPEUTIC PROCEDURES'.