

# ILEU Antibody - middle region

Rabbit Polyclonal Antibody

Catalog # AI16125

## Product Information

---

Application	WB
Primary Accession	<a href="#">P30740</a>
Other Accession	<a href="#">XP_006715071</a>
Reactivity	Human
Host	Rabbit
Clonality	Polyclonal
Calculated MW	42742

## Additional Information

---

Gene ID	1992
Alias Symbol Other Names	SERPINB1, ELANH2, MNEI, PI2, Leukocyte elastase inhibitor, LEI, Monocyte/neutrophil elastase inhibitor, EI, M/NEI, Peptidase inhibitor 2, PI-2, Serpin B1, SERPINB1, ELANH2, MNEI, PI2
Format	Liquid. Purified antibody supplied in 1x PBS buffer with 0.09% (w/v) sodium azide and 2% sucrose.
Reconstitution & Storage	Add 50 $\mu$ l of distilled water. Final Anti-ILEU antibody concentration is 1 mg/ml in PBS buffer with 2% sucrose. For longer periods of storage, store at -20°C. Avoid repeat freeze-thaw cycles.
Precautions	ILEU Antibody - middle region is for research use only and not for use in diagnostic or therapeutic procedures.

## Protein Information

---

Name	SERPINB1
Synonyms	ELANH2, MNEI, PI2
Function	Neutrophil serine protease inhibitor that plays an essential role in the regulation of the innate immune response, inflammation and cellular homeostasis (PubMed: <a href="#">30692621</a> ). Acts primarily to protect the cell from proteases released in the cytoplasm during stress or infection. These proteases are important in killing microbes but when released from granules, these potent enzymes also destroy host proteins and contribute to mortality. Regulates the activity of the neutrophil proteases elastase, cathepsin G, proteinase-3, chymase, chymotrypsin, and kallikrein-3 (PubMed: <a href="#">11747453</a> , PubMed: <a href="#">30692621</a> ). Also acts as a potent intracellular inhibitor of GZMH by

directly blocking its proteolytic activity (PubMed:[23269243](#)). During inflammation, limits the activity of inflammatory caspases CASP1, CASP4 and CASP5 by suppressing their caspase-recruitment domain (CARD) oligomerization and enzymatic activation (PubMed:[30692621](#)). When secreted, promotes the proliferation of beta-cells via its protease inhibitory function (PubMed:[26701651](#)).

**Cellular Location**

Secreted. Cytoplasm. Cytolytic granule. Early endosome

**Tissue Location**

In human bone marrow, present in all CD45+ populations. Expression levels are highest in the neutrophil lineage, intermediate in monocytic, and lowest in lymphocytic lineage. Within the neutrophil lineage, expression is highest in promyelocytes

## Background

---

Regulates the activity of the neutrophil proteases elastase, cathepsin G, proteinase-3, chymase, chymotrypsin, and kallikrein-3. Also functions as a potent intracellular inhibitor of granzyme H.

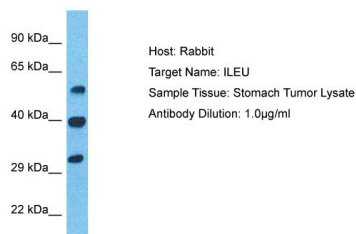
## References

---

Remold-O'Donnell E.,et al.Proc. Natl. Acad. Sci. U.S.A. 89:5635-5639(1992).  
Zeng W.,et al.Gene 213:179-187(1998).  
Ota T.,et al.Nat. Genet. 36:40-45(2004).  
Kalnine N.,et al.Submitted (MAY-2003) to the EMBL/GenBank/DDBJ databases.  
Totoki Y.,et al.Submitted (APR-2005) to the EMBL/GenBank/DDBJ databases.

## Images

---



Host: Rabbit  
Target Name: ILEU  
Sample Tissue: Stomach Tumor lysates  
Antibody Dilution: 1.0µg/ml

Please note: All products are 'FOR RESEARCH USE ONLY. NOT FOR USE IN DIAGNOSTIC OR THERAPEUTIC PROCEDURES'.