

SMU1 Antibody - N-terminal region

Rabbit Polyclonal Antibody

Catalog # AI16129

Product Information

Application	WB
Primary Accession	Q2TAY7
Other Accession	NP_060695
Reactivity	Human
Host	Rabbit
Clonality	Polyclonal
Calculated MW	57544

Additional Information

Gene ID	55234
Alias Symbol Other Names	SMU1, WD40 repeat-containing protein SMU1, Smu-1 suppressor of mec-8 and unc-52 protein homolog, WD40 repeat-containing protein SMU1, N-terminally processed, SMU1
Format	Liquid. Purified antibody supplied in 1x PBS buffer with 0.09% (w/v) sodium azide and 2% sucrose.
Reconstitution & Storage	Add 50 µl of distilled water. Final Anti-SMU1 antibody concentration is 1 mg/ml in PBS buffer with 2% sucrose. For longer periods of storage, store at -20°C. Avoid repeat freeze-thaw cycles.
Precautions	SMU1 Antibody - N-terminal region is for research use only and not for use in diagnostic or therapeutic procedures.

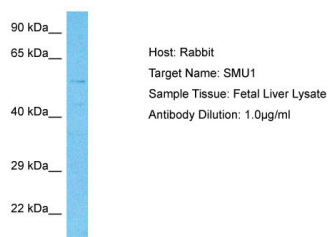
Protein Information

Name	SMU1
Function	Involved in pre-mRNA splicing as a component of the spliceosome (PubMed: 28781166). Regulates alternative splicing of the HSPG2 pre-mRNA (By similarity). Required for normal accumulation of IK (PubMed: 24945353). Required for normal mitotic spindle assembly and normal progress through mitosis (By similarity).
Cellular Location	Cytoplasm {ECO:0000250 UniProtKB:Q99M63}. Nucleus. Nucleus speckle {ECO:0000250 UniProtKB:Q76B40}. Note=Colocalizes with SRSF1 in nuclear speckles. {ECO:0000250 UniProtKB:Q76B40}

References

Ota T.,et al.Nat. Genet. 36:40-45(2004).
Humphray S.J.,et al.Nature 429:369-374(2004).
Bienvenut W.V.,et al.Submitted (DEC-2008) to UniProtKB.
Gauci S.,et al.Anal. Chem. 81:4493-4501(2009).
Burkard T.R.,et al.BMC Syst. Biol. 5:17-17(2011).

Images



Host: Rabbit
Target Name: SMU1
Sample Tissue: Fetal Liver Lysate
Antibody Dilution: 1.0µg/ml

Host: Rabbit
Target Name: SMU1
Sample Tissue: Fetal Liver lysates
Antibody Dilution: 1.0µg/ml

Please note: All products are 'FOR RESEARCH USE ONLY. NOT FOR USE IN DIAGNOSTIC OR THERAPEUTIC PROCEDURES'.