

TAB2 Antibody - middle region

Rabbit Polyclonal Antibody

Catalog # AI16133

Product Information

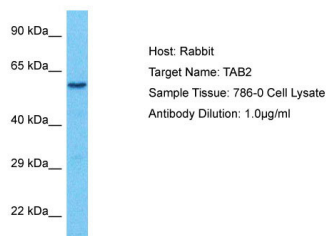
Application	WB
Primary Accession	Q9NYJ8-2
Reactivity	Human
Host	Rabbit
Clonality	Polyclonal
Calculated MW	58 kDa

Additional Information

Alias Symbol	TAB2, KIAA0733, MAP3K7IP2,
Format	Liquid. Purified antibody supplied in 1x PBS buffer with 0.09% (w/v) sodium azide and 2% sucrose.
Reconstitution & Storage	Add 50 μ l of distilled water. Final Anti-TAB2 antibody concentration is 1 mg/ml in PBS buffer with 2% sucrose. For longer periods of storage, store at -20°C. Avoid repeat freeze-thaw cycles.
Precautions	TAB2 Antibody - middle region is for research use only and not for use in diagnostic or therapeutic procedures.

Protein Information

Images



Host: Rabbit
Target Name: TAB2
Sample Tissue: 786-0 Whole Cell lysates
Antibody Dilution: 1.0 μ g/ml

Please note: All products are 'FOR RESEARCH USE ONLY. NOT FOR USE IN DIAGNOSTIC OR THERAPEUTIC PROCEDURES'.