

ASF1A Antibody - C-terminal region

Rabbit Polyclonal Antibody

Catalog # AI16139

Product Information

Application	WB
Primary Accession	Q9Y294
Other Accession	NP_054753
Reactivity	Human
Host	Rabbit
Clonality	Polyclonal
Calculated MW	22969

Additional Information

Gene ID	25842
Alias Symbol Other Names	ASF1A, CGI-98, HSPC146, Histone chaperone ASF1A, Anti-silencing function protein 1 homolog A, hAsf1, hAsf1a, CCG1-interacting factor A, CIA, hCIA, ASF1A
Format	Liquid. Purified antibody supplied in 1x PBS buffer with 0.09% (w/v) sodium azide and 2% sucrose.
Reconstitution & Storage	Add 50 μ l of distilled water. Final Anti-ASF1A antibody concentration is 1 mg/ml in PBS buffer with 2% sucrose. For longer periods of storage, store at -20°C. Avoid repeat freeze-thaw cycles.
Precautions	ASF1A Antibody - C-terminal region is for research use only and not for use in diagnostic or therapeutic procedures.

Protein Information

Name	ASF1A {ECO:0000303 PubMed:10759893, ECO:0000312 HGNC:HGNC:20995}
Function	Histone chaperone that facilitates histone deposition and histone exchange and removal during nucleosome assembly and disassembly (PubMed: 10759893 , PubMed: 11897662 , PubMed: 12842904 , PubMed: 14718166 , PubMed: 15664198 , PubMed: 16151251 , PubMed: 21454524). Cooperates with chromatin assembly factor 1 (CAF-1) to promote replication-dependent chromatin assembly and with HIRA to promote replication-independent chromatin assembly (PubMed: 11897662 , PubMed: 14718166 , PubMed: 15664198). Promotes homologous recombination-mediated repair of double-strand breaks (DSBs) at stalled or collapsed replication forks: acts by mediating histone replacement at DSBs, leading to recruitment of the MMS22L-TONSL complex and subsequent

loading of RAD51 (PubMed:[29478807](#)). Also involved in the nuclear import of the histone H3-H4 dimer together with importin-4 (IPO4); specifically recognizes and binds newly synthesized histones with the monomethylation of H3 'Lys-9' and acetylation at 'Lys-14' (H3K9me1K14ac) marks, and diacetylation at 'Lys-5' and 'Lys-12' of H4 (H4K5K12ac) marks in the cytosol (PubMed:[21454524](#), PubMed:[29408485](#)). Required for the formation of senescence-associated heterochromatin foci (SAHF) and efficient senescence-associated cell cycle exit (PubMed:[15621527](#)).

Cellular Location Nucleus. Chromosome

Tissue Location Ubiquitously expressed.

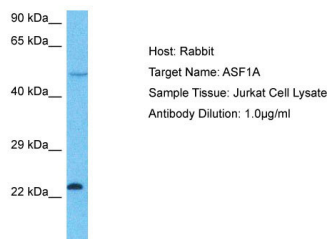
Background

Histone chaperone that facilitates histone deposition and histone exchange and removal during nucleosome assembly and disassembly. Cooperates with chromatin assembly factor 1 (CAF-1) to promote replication-dependent chromatin assembly and with HIRA to promote replication-independent chromatin assembly. Required for the formation of senescence-associated heterochromatin foci (SAHF) and efficient senescence-associated cell cycle exit.

References

Munakata T.,et al.Genes Cells 5:221-233(2000).
Sillje H.H.W.,et al.Curr. Biol. 11:1068-1073(2001).
Lai C.-H.,et al.Genome Res. 10:703-713(2000).
Zhang Q.-H.,et al.Genome Res. 10:1546-1560(2000).
Wiemann S.,et al.Genome Res. 11:422-435(2001).

Images



Host: Rabbit
Target Name: ASF1A
Sample Tissue: Jurkat Whole Cell lysates
Antibody Dilution: 1.0µg/ml

Please note: All products are 'FOR RESEARCH USE ONLY. NOT FOR USE IN DIAGNOSTIC OR THERAPEUTIC PROCEDURES'.