

# BCMO1 Antibody - N-terminal region

Rabbit Polyclonal Antibody

Catalog # AI16142

## Product Information

Application	WB
Primary Accession	<a href="#">Q9HAY6</a>
Other Accession	<a href="#">NP_059125</a>
Reactivity	Human
Host	Rabbit
Clonality	Polyclonal
Calculated MW	62637

## Additional Information

Gene ID	53630
Alias Symbol Other Names	BCMO1, BCDO, BCDO1, Beta, beta-carotene 15, 15'-monooxygenase, 1.14.99.36, Beta-carotene dioxygenase 1, Beta-carotene oxygenase 1 {ECO:0000312 HGNC:HGNC:13815}, BCO1 ( <a href="#">HGNC:13815</a> )
Format	Liquid. Purified antibody supplied in 1x PBS buffer with 0.09% (w/v) sodium azide and 2% sucrose.
Reconstitution & Storage	Add 50 $\mu$ l of distilled water. Final Anti-BCMO1 antibody concentration is 1 mg/ml in PBS buffer with 2% sucrose. For longer periods of storage, store at -20°C. Avoid repeat freeze-thaw cycles.
Precautions	BCMO1 Antibody - N-terminal region is for research use only and not for use in diagnostic or therapeutic procedures.

## Protein Information

Name	BCO1 ( <a href="#">HGNC:13815</a> )
Function	Symmetrically cleaves beta-carotene into two molecules of retinal using a dioxygenase mechanism.
Cellular Location	Cytoplasm, cytosol {ECO:0000250 UniProtKB:Q9I993}
Tissue Location	Highly expressed in retinal pigment epithelium. Also expressed in kidney, testis, liver, brain, small intestine and colon.

## Background

Symmetrically cleaves beta-carotene into two molecules of retinal. The reaction proceeds in three stages, epoxidation of the 15,15'-double bond, hydration of the double bond leading to ring opening, and oxidative cleavage of the diol formed.

## References

---

Yan W.,et al.Genomics 72:193-202(2001).

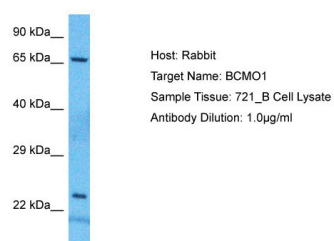
Ota T.,et al.Nat. Genet. 36:40-45(2004).

Mural R.J.,et al.Submitted (SEP-2005) to the EMBL/GenBank/DDBJ databases.

Lindqvist A.,et al.J. Nutr. 137:2346-2350(2007).

## Images

---



Host: Rabbit  
Target Name: BCMO1  
Sample Tissue: 721\_B Cell Lysate  
Antibody Dilution: 1.0µg/ml

Host: Rabbit  
Target Name: BCMO1  
Sample Tissue: 721\_B Whole Cell lysates  
Antibody Dilution: 1.0µg/ml

Please note: All products are 'FOR RESEARCH USE ONLY. NOT FOR USE IN DIAGNOSTIC OR THERAPEUTIC PROCEDURES'.