

CLIC3 Antibody - middle region

Rabbit Polyclonal Antibody

Catalog # AI16145

Product Information

Application	WB
Primary Accession	O95833
Other Accession	NP_004660
Reactivity	Human
Host	Rabbit
Clonality	Polyclonal
Calculated MW	26648

Additional Information

Gene ID	9022
Alias Symbol Other Names	CLIC3, Chloride intracellular channel protein 3, CLIC3
Format	Liquid. Purified antibody supplied in 1x PBS buffer with 0.09% (w/v) sodium azide and 2% sucrose.
Reconstitution & Storage	Add 50 μ l of distilled water. Final Anti-CLIC3 antibody concentration is 1 mg/ml in PBS buffer with 2% sucrose. For longer periods of storage, store at -20°C. Avoid repeat freeze-thaw cycles.
Precautions	CLIC3 Antibody - middle region is for research use only and not for use in diagnostic or therapeutic procedures.

Protein Information

Name	CLIC3 {ECO:0000303 PubMed:32066374, ECO:0000312 HGNC:HGNC:2064}
Function	In the soluble state, catalyzes glutaredoxin-like thiol disulfide exchange reactions with reduced glutathione as electron donor (PubMed: 28198360 , PubMed: 37759794). Reduced in a glutathione-dependent way and secreted into the extracellular matrix where it activates TGM2 and promotes blood vessel growth during tissue remodeling as occurs in tumorigenesis. Can reduce specific cysteines in TGM2 and regulate cofactor binding (PubMed: 28198360). Can insert into membranes and form outwardly rectifying chloride ion channels. May participate in cellular growth control.
Cellular Location	Nucleus. Membrane; Single-pass membrane protein. Cell membrane; Single-pass membrane protein. Cytoplasm. Secreted, extracellular space, extracellular matrix. Note=Predominantly nuclear. Some protein was found in

the cytoplasm. Exists both as soluble cytoplasmic protein and as membrane protein with probably a single transmembrane domain (By similarity). Secreted into the extracellular matrix by activated fibroblasts. {ECO:0000250, ECO:0000269 | PubMed:28198360}

Tissue Location

Detected in placenta (at protein level). Widely expressed. High expression is found in placenta followed by lung and heart. Low expression in skeletal muscle, kidney and pancreas

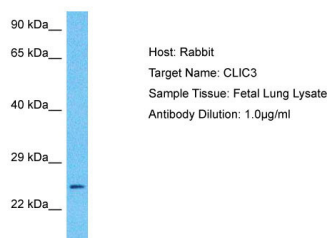
Background

Can insert into membranes and form chloride ion channels. May participate in cellular growth control.

References

Humphray S.J.,et al.Nature 429:369-374(2004).
Mural R.J.,et al.Submitted (JUL-2005) to the EMBL/GenBank/DDBJ databases.
Qian Z.,et al.J. Biol. Chem. 274:1621-1627(1999).
Money T.T.,et al.Placenta 28:429-436(2007).
Littler D.R.,et al.Proteins 78:1594-1600(2010).

Images



Host: Rabbit
Target Name: CLIC3
Sample Tissue: Fetal Lung Lysate
Antibody Dilution: 1.0µg/ml

Host: Rabbit
Target Name: CLIC3
Sample Tissue: Fetal Lung lysates
Antibody Dilution: 1.0µg/ml

Please note: All products are 'FOR RESEARCH USE ONLY. NOT FOR USE IN DIAGNOSTIC OR THERAPEUTIC PROCEDURES'.