

DMC1 Antibody - middle region

Rabbit Polyclonal Antibody

Catalog # AI16148

Product Information

Application	WB
Primary Accession	Q14565
Other Accession	NP_008999
Reactivity	Human
Host	Rabbit
Clonality	Polyclonal
Calculated MW	37681

Additional Information

Gene ID	11144
Alias Symbol Other Names	DMC1, DMC1H, LIM15, Meiotic recombination protein DMC1/LIM15 homolog, DMC1, DMC1H, LIM15
Format	Liquid. Purified antibody supplied in 1x PBS buffer with 0.09% (w/v) sodium azide and 2% sucrose.
Reconstitution & Storage	Add 50 μ l of distilled water. Final Anti-DMC1 antibody concentration is 1 mg/ml in PBS buffer with 2% sucrose. For longer periods of storage, store at -20°C. Avoid repeat freeze-thaw cycles.
Precautions	DMC1 Antibody - middle region is for research use only and not for use in diagnostic or therapeutic procedures.

Protein Information

Name	DMC1
Synonyms	DMC1H, LIM15
Function	Participates in meiotic recombination, specifically in homologous strand assimilation, which is required for the resolution of meiotic double-strand breaks.
Cellular Location	Nucleus. Chromosome {ECO:0000250 UniProtKB:Q61880}

Background

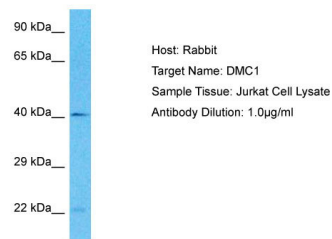
May participate in meiotic recombination, specifically in homologous strand assimilation, which is required

for the resolution of meiotic double-strand breaks.

References

Sato S.,et al.DNA Res. 2:183-185(1995).
Habu T.,et al.Nucleic Acids Res. 24:470-477(1996).
Collins J.E.,et al.Genome Biol. 5:R84.1-R84.11(2004).
Ota T.,et al.Nat. Genet. 36:40-45(2004).
Dunham I.,et al.Nature 402:489-495(1999).

Images



Host: Rabbit
Target Name: DMC1
Sample Tissue: Jurkat Whole Cell lysates
Antibody Dilution: 1.0µg/ml

Please note: All products are 'FOR RESEARCH USE ONLY. NOT FOR USE IN DIAGNOSTIC OR THERAPEUTIC PROCEDURES'.