

# DRG1 Antibody - middle region

Rabbit Polyclonal Antibody

Catalog # AI16149

## Product Information

Application	WB
Primary Accession	<a href="#">Q9Y295</a>
Reactivity	Human
Host	Rabbit
Clonality	Polyclonal
Calculated MW	40542

## Additional Information

Gene ID	4733
Alias Symbol Other Names	DRG1, NEDD3, Developmentally-regulated GTP-binding protein 1, DRG-1, Neural precursor cell expressed developmentally down-regulated protein 3, NEDD-3, DRG1, NEDD3
Format	Liquid. Purified antibody supplied in 1x PBS buffer with 0.09% (w/v) sodium azide and 2% sucrose.
Reconstitution & Storage	Add 50 $\mu$ l of distilled water. Final Anti-DRG1 antibody concentration is 1 mg/ml in PBS buffer with 2% sucrose. For longer periods of storage, store at -20°C. Avoid repeat freeze-thaw cycles.
Precautions	DRG1 Antibody - middle region is for research use only and not for use in diagnostic or therapeutic procedures.

## Protein Information

Name	DRG1 {ECO:0000303   PubMed:29915238, ECO:0000312   HGNC:HGNC:3029}
Function	<p>Catalyzes the conversion of GTP to GDP through hydrolysis of the gamma-phosphate bond in GTP (PubMed:<a href="#">23711155</a>, PubMed:<a href="#">29915238</a>, PubMed:<a href="#">37179472</a>). Appears to have an intrinsic GTPase activity that is stimulated by ZC3H15/DFRP1 binding likely by increasing the affinity for the potassium ions (PubMed:<a href="#">23711155</a>). When hydroxylated at C-3 of 'Lys-22' by JMJD7, may bind to RNA and play a role in translation (PubMed:<a href="#">19819225</a>, PubMed:<a href="#">29915238</a>). Binds to microtubules and promotes microtubule polymerization and stability that are required for mitotic spindle assembly during prophase to anaphase transition. GTPase activity is not necessary for these microtubule-related functions (PubMed:<a href="#">28855639</a>).</p> <p>Nucleus. Cytoplasm. Note=The DRG1-ZC3H15/DFRP1 complex associates with</p>

<b>Cellular Location</b>	polysomes
<b>Tissue Location</b>	High levels in skeletal muscle, heart, and kidney. Intermediate levels in liver, placenta and brain. Low levels in colon, thymus, spleen, small intestine, lung and leukocytes

## Background

---

Critical regulator of cell growth under specific conditions. Implicated in differentiation and cell cycle arrest.

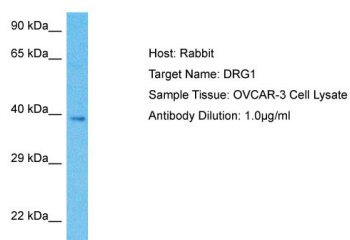
## References

---

Zhao X.-F.,et al.Biochim. Biophys. Acta 1448:109-114(1998).  
 Li B.,et al.Biochim. Biophys. Acta 1491:196-204(2000).  
 Collins J.E.,et al.Genome Biol. 5:R84.1-R84.11(2004).  
 Kalnine N.,et al.Submitted (MAY-2003) to the EMBL/GenBank/DDBJ databases.  
 Ota T.,et al.Nat. Genet. 36:40-45(2004).

## Images

---



Host: Rabbit  
 Target Name: DRG1  
 Sample Tissue: OVCAR-3 Whole Cell lysates  
 Antibody Dilution: 1.0µg/ml

Please note: All products are 'FOR RESEARCH USE ONLY. NOT FOR USE IN DIAGNOSTIC OR THERAPEUTIC PROCEDURES'.