

SERPINA1 antibody - C-terminal region

Rabbit Polyclonal Antibody

Catalog # AI16165

Product Information

Application	WB, IHC
Primary Accession	P01009
Other Accession	NM_000295 , NP_000286
Reactivity	Human
Host	Rabbit
Clonality	Polyclonal
Calculated MW	46737

Additional Information

Gene ID	5265
Alias Symbol Other Names	PI, A1A, AAT, PI1, A1AT, PRO2275, alpha1AT Alpha-1-antitrypsin, Alpha-1 protease inhibitor, Alpha-1-antiproteinase, Serpin A1, Short peptide from AAT, SPAAT, SERPINA1, AAT, PI
Format	Liquid. Purified antibody supplied in 1x PBS buffer with 0.09% (w/v) sodium azide and 2% sucrose.
Reconstitution & Storage	Add 100 ul of distilled water. Final anti-SERPINA1 antibody concentration is 1 mg/ml in PBS buffer with 2% sucrose. For longer periods of storage, store at 20°C. Avoid repeat freeze-thaw cycles.
Precautions	SERPINA1 antibody - C-terminal region is for research use only and not for use in diagnostic or therapeutic procedures.

Protein Information

Name	SERPINA1 (HGNC:8941)
Synonyms	AAT, PI
Function	Inhibitor of serine proteases. Its primary target is elastase, but it also has a moderate affinity for plasmin and thrombin. Irreversibly inhibits trypsin, chymotrypsin and plasminogen activator. The aberrant form inhibits insulin-induced NO synthesis in platelets, decreases coagulation time and has proteolytic activity against insulin and plasmin.
Cellular Location	Secreted. Endoplasmic reticulum. Note=The S and Z allele are not secreted effectively and accumulate intracellularly in the endoplasmic reticulum

Tissue Location

Ubiquitous. Expressed in leukocytes and plasma.

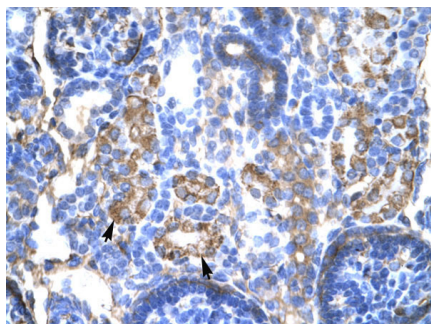
Background

Inhibitor of serine proteases. Its primary target is elastase, but it also has a moderate affinity for plasmin and thrombin. Irreversibly inhibits trypsin, chymotrypsin and plasminogen activator. The aberrant form inhibits insulin-induced NO synthesis in platelets, decreases coagulation time and has proteolytic activity against insulin and plasmin.

References

Bollen A.,et al.DNA 2:255-264(1983).
Long G.L.,et al.Biochemistry 23:4828-4837(1984).
Rosenberg S.,et al.Nature 312:77-80(1984).
Ciliberto G.,et al.Cell 41:531-540(1985).
Nukiwa T.,et al.J. Biol. Chem. 261:15989-15994(1986).

Images



WB Suggested Anti-SERPINA1 Antibody Titration: 4.0-8.0
Positive Control: Human kidney lysate



WB Suggested Anti-SERPINA1 Antibody Titration:
1.25µg/ml
ELISA Titer: 1:12500
Positive Control: HepG2 cell lysate
SERPINA1 is strongly supported by BioGPS gene
expression data to be expressed in Human HepG2 cells

Please note: All products are 'FOR RESEARCH USE ONLY. NOT FOR USE IN DIAGNOSTIC OR THERAPEUTIC PROCEDURES'.