

FASLG antibody - middle region

Rabbit Polyclonal Antibody

Catalog # AI16177

Product Information

Application	WB
Primary Accession	P48023
Other Accession	NM_000639 , NP_000630
Reactivity	Human, Horse, Bovine
Predicted	Human, Horse, Bovine
Host	Rabbit
Clonality	Polyclonal
Calculated MW	31485

Additional Information

Gene ID	356
Alias Symbol	FASL, CD178, CD95L, CD95-L, TNFSF6, APT1LG1
Other Names	Tumor necrosis factor ligand superfamily member 6, Apoptosis antigen ligand, APTL, CD95 ligand, CD95-L, Fas antigen ligand, Fas ligand, FasL, CD178, Tumor necrosis factor ligand superfamily member 6, membrane form, Tumor necrosis factor ligand superfamily member 6, soluble form, Receptor-binding FasL ectodomain, Soluble Fas ligand, sFasL, ADAM10-processed FasL form, APL, FasL intracellular domain, FasL ICD, SPPL2A-processed FasL form, SPA, FASLG, APT1LG1, CD95L, FASL, TNFSF6
Format	Lyophilized
Reconstitution & Storage	Add 100 ul of distilled water. Final anti-FASLG antibody concentration is 1 mg/ml in PBS buffer with 2% sucrose. For longer periods of storage, store at 20°C. Avoid repeat freeze-thaw cycles.
Precautions	FASLG antibody - middle region is for research use only and not for use in diagnostic or therapeutic procedures.

Protein Information

Name	FASLG
Synonyms	APT1LG1, CD95L, FASL, TNFSF6
Function	Cytokine that binds to TNFRSF6/FAS, a receptor that transduces the apoptotic signal into cells (PubMed: 26334989 , PubMed: 9228058). Involved in cytotoxic T-cell-mediated apoptosis, natural killer cell-mediated apoptosis and in T-cell development (PubMed: 7528780 , PubMed: 9228058 ,

PubMed:[9427603](#)). Initiates fratricidal/suicidal activation-induced cell death (AICD) in antigen- activated T-cells contributing to the termination of immune responses (By similarity). TNFRSF6/FAS-mediated apoptosis also has a role in the induction of peripheral tolerance (By similarity). Binds to TNFRSF6B/DcR3, a decoy receptor that blocks apoptosis (PubMed:[27806260](#)).

Cellular Location

Cell membrane; Single-pass type II membrane protein. Cytoplasmic vesicle lumen Lysosome lumen. Note=Is internalized into multivesicular bodies of secretory lysosomes after phosphorylation by FGR and monoubiquitination (PubMed:17164290). Colocalizes with the SPPL2A protease at the cell membrane (PubMed:17557115) [FasL intracellular domain]: Nucleus. Note=The FasL ICD cytoplasmic form is translocated into the nucleus.

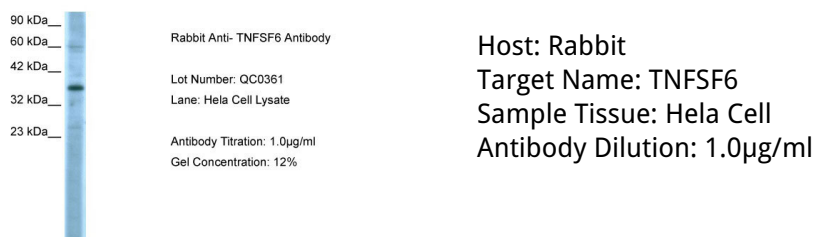
Background

Cytokine that binds to TNFRSF6/FAS, a receptor that transduces the apoptotic signal into cells. May be involved in cytotoxic T-cell mediated apoptosis and in T-cell development. TNFRSF6/FAS-mediated apoptosis may have a role in the induction of peripheral tolerance, in the antigen-stimulated suicide of mature T-cells, or both. Binding to the decoy receptor TNFRSF6B/DcR3 modulates its effects.

References

Alderson M.,et al.J. Exp. Med. 181:71-77(1995).
Takahashi T.,et al.Int. Immunol. 6:1567-1574(1994).
Schaetzlein C.E.,et al.Submitted (JUN-1995) to the EMBL/GenBank/DDBJ databases.
Mita E.,et al.Biochem. Biophys. Res. Commun. 204:468-474(1994).
Zeytun A.,et al.Submitted (JUL-2000) to the EMBL/GenBank/DDBJ databases.

Images



Please note: All products are 'FOR RESEARCH USE ONLY. NOT FOR USE IN DIAGNOSTIC OR THERAPEUTIC PROCEDURES'.