

# CCNG1 antibody - N-terminal region

Rabbit Polyclonal Antibody

Catalog # AI16180

## Product Information

---

<b>Application</b>	WB
<b>Primary Accession</b>	<a href="#">P51959</a>
<b>Other Accession</b>	<a href="#">NM_004060</a> , <a href="#">NP_004051</a>
<b>Reactivity</b>	Human, Mouse, Rat, Pig, Dog, Bovine
<b>Predicted</b>	Human, Mouse, Rat, Pig, Dog, Bovine
<b>Host</b>	Rabbit
<b>Clonality</b>	Polyclonal
<b>Calculated MW</b>	34074

## Additional Information

---

<b>Gene ID</b>	900
<b>Alias Symbol</b>	CCNG
<b>Other Names</b>	Cyclin-G1, Cyclin-G, CCNG1, CCNG, CYCG1
<b>Format</b>	Liquid. Purified antibody supplied in 1x PBS buffer with 0.09% (w/v) sodium azide and 2% sucrose.
<b>Reconstitution &amp; Storage</b>	Add 50 ul of distilled water. Final anti-CCNG1 antibody concentration is 1 mg/ml in PBS buffer with 2% sucrose. For longer periods of storage, store at 20°C. Avoid repeat freeze-thaw cycles.
<b>Precautions</b>	CCNG1 antibody - N-terminal region is for research use only and not for use in diagnostic or therapeutic procedures.

## Protein Information

---

<b>Name</b>	CCNG1
<b>Synonyms</b>	CCNG, CYCG1
<b>Function</b>	May play a role in growth regulation. Is associated with G2/M phase arrest in response to DNA damage. May be an intermediate by which p53 mediates its role as an inhibitor of cellular proliferation (By similarity).
<b>Cellular Location</b>	Nucleus. Note=DNA replication foci after DNA damage
<b>Tissue Location</b>	High levels in skeletal muscle, ovary, kidney and colon

## Background

---

May play a role in growth regulation. Is associated with G2/M phase arrest in response to DNA damage. May be an intermediate by which p53 mediates its role as an inhibitor of cellular proliferation (By similarity).

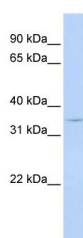
## References

---

Horne M.C.,et al.J. Biol. Chem. 271:6050-6061(1996).  
Bates S.A.,et al.Oncogene 13:1103-1109(1996).  
Endo Y.,et al.Genomics 38:92-95(1996).  
Reimer C.L.,et al.J. Biol. Chem. 274:11022-11029(1999).  
Ota T.,et al.Nat. Genet. 36:40-45(2004).

## Images

---



WB Suggested Anti-CCNG1 Antibody Titration: 0.2-1 µg/ml  
ELISA Titer: 1:62500  
Positive Control: MCF7 cell lysate

Please note: All products are 'FOR RESEARCH USE ONLY. NOT FOR USE IN DIAGNOSTIC OR THERAPEUTIC PROCEDURES'.