

RGS5 antibody - middle region

Rabbit Polyclonal Antibody

Catalog # AI16192

Product Information

Application	WB
Primary Accession	O15539
Other Accession	NM_003617 , NP_003608
Reactivity	Human, Mouse, Rat, Pig, Dog, Guinea Pig, Bovine
Predicted	Human, Mouse, Rat, Pig, Dog, Guinea Pig, Bovine
Host	Rabbit
Clonality	Polyclonal
Calculated MW	20946

Additional Information

Gene ID	8490
Alias Symbol Other Names	MST092, MST106, MST129, MSTP032, MSTP092, MSTP106, MSTP129 Regulator of G-protein signaling 5, RGS5, RGS5
Format	Liquid. Purified antibody supplied in 1x PBS buffer with 0.09% (w/v) sodium azide and 2% sucrose.
Reconstitution & Storage	Add 50 ul of distilled water. Final anti-RGS5 antibody concentration is 1 mg/ml in PBS buffer with 2% sucrose. For longer periods of storage, store at 20°C. Avoid repeat freeze-thaw cycles.
Precautions	RGS5 antibody - middle region is for research use only and not for use in diagnostic or therapeutic procedures.

Protein Information

Name	RGS5
Function	Inhibits signal transduction by increasing the GTPase activity of G protein alpha subunits thereby driving them into their inactive GDP-bound form. Binds to G(i)-alpha and G(o)-alpha, but not to G(s)-alpha (By similarity).
Cellular Location	[Isoform 1]: Cytoplasm. Membrane

Background

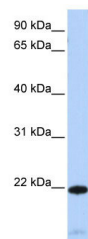
Inhibits signal transduction by increasing the GTPase activity of G protein alpha subunits thereby driving them into their inactive GDP-bound form. Binds to G(i)-alpha and G(o)-alpha, but not to G(s)-alpha (By

similarity).

References

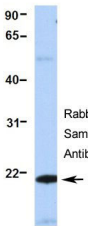
Chatterjee T.K.,et al.Submitted (OCT-1997) to the EMBL/GenBank/DDBJ databases.
Seki N.,et al.J. Hum. Genet. 43:202-205(1998).
Cismowski M.J.,et al.Nat. Biotechnol. 17:878-883(1999).
Liang Y.,et al.FEBS J. 272:791-799(2005).
Puhl H.L. III,et al.Submitted (MAR-2002) to the EMBL/GenBank/DDBJ databases.

Images



WB Suggested Anti-RGS5 Antibody Titration: 0.2-1 µg/ml
ELISA Titer: 1:62500
Positive Control: Human heart

RGS5



Rabbit Anti-RGS5
Sample Type: Human Fetal Heart
Antibody Concentration: 1ug/mL

Hum. Fetal Heart

Please note: All products are 'FOR RESEARCH USE ONLY. NOT FOR USE IN DIAGNOSTIC OR THERAPEUTIC PROCEDURES'.