

DOK2 antibody - C-terminal region

Rabbit Polyclonal Antibody

Catalog # AI16194

Product Information

Application	WB
Primary Accession	O60496
Other Accession	NM_003974 , NP_003965
Reactivity	Human, Mouse, Rat, Pig, Dog, Horse, Bovine
Predicted	Human, Mouse, Rat, Pig, Dog, Horse, Bovine
Host	Rabbit
Clonality	Polyclonal
Calculated MW	45379

Additional Information

Gene ID	9046
Alias Symbol	p56DOK, p56dok-2
Other Names	Docking protein 2, Downstream of tyrosine kinase 2, p56(dok-2), DOK2
Format	Liquid. Purified antibody supplied in 1x PBS buffer with 0.09% (w/v) sodium azide and 2% sucrose.
Reconstitution & Storage	Add 50 ul of distilled water. Final anti-DOK2 antibody concentration is 1 mg/ml in PBS buffer with 2% sucrose. For longer periods of storage, store at 20°C. Avoid repeat freeze-thaw cycles.
Precautions	DOK2 antibody - C-terminal region is for research use only and not for use in diagnostic or therapeutic procedures.

Protein Information

Name	DOK2
Function	DOK proteins are enzymatically inert adaptor or scaffolding proteins. They provide a docking platform for the assembly of multimolecular signaling complexes. DOK2 may modulate the cellular proliferation induced by IL-4, as well as IL-2 and IL-3. May be involved in modulating Bcr-Abl signaling. Attenuates EGF-stimulated MAP kinase activation (By similarity).
Tissue Location	Highly expressed in peripheral blood leukocytes, lymph nodes and spleen. Lower expression in thymus, bone marrow and fetal liver.

Background

DOK proteins are enzymatically inert adaptor or scaffolding proteins. They provide a docking platform for the assembly of multimolecular signaling complexes. DOK2 may modulate the cellular proliferation induced by IL-4, as well as IL-2 and IL-3. May be involved in modulating Bcr-Abl signaling. Attenuates EGF-stimulated MAP kinase activation (By similarity).

References

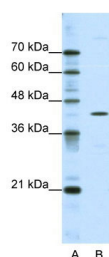
Di Cristofano A.,et al.J. Biol. Chem. 273:4827-4830(1998).

Brill L.M.,et al.Anal. Chem. 76:2763-2772(2004).

Rush J.,et al.Nat. Biotechnol. 23:94-101(2005).

Mayya V.,et al.Sci. Signal. 2:RA46-RA46(2009).

Images



WB Suggested Anti-DOK2 Antibody Titration: 0.2-1 µg/ml

ELISA Titer: 1:62500

Positive Control: HepG2 cell lysate

Please note: All products are 'FOR RESEARCH USE ONLY. NOT FOR USE IN DIAGNOSTIC OR THERAPEUTIC PROCEDURES'.