

# HSPB1 antibody - C-terminal region

Rabbit Polyclonal Antibody

Catalog # AI16199

## Product Information

---

<b>Application</b>	WB
<b>Primary Accession</b>	<a href="#">P04792</a>
<b>Other Accession</b>	<a href="#">NM_001540</a> , <a href="#">NP_001531</a>
<b>Reactivity</b>	Human
<b>Predicted</b>	Human
<b>Host</b>	Rabbit
<b>Clonality</b>	Polyclonal
<b>Calculated MW</b>	22783

## Additional Information

---

<b>Gene ID</b>	3315
<b>Alias Symbol</b>	CMT2F, HMN2B, HSP27, HSP28, Hsp25, SRP27, HS.76067
<b>Other Names</b>	Heat shock protein beta-1, HspB1, 28 kDa heat shock protein, Estrogen-regulated 24 kDa protein, Heat shock 27 kDa protein, HSP 27, Stress-responsive protein 27, SRP27, HSPB1, HSP27, HSP28
<b>Format</b>	Liquid. Purified antibody supplied in 1x PBS buffer with 0.09% (w/v) sodium azide and 2% sucrose.
<b>Reconstitution &amp; Storage</b>	Add 100 ul of distilled water. Final anti-HSPB1 antibody concentration is 1 mg/ml in PBS buffer with 2% sucrose. For longer periods of storage, store at 20°C. Avoid repeat freeze-thaw cycles.
<b>Precautions</b>	HSPB1 antibody - C-terminal region is for research use only and not for use in diagnostic or therapeutic procedures.

## Protein Information

---

<b>Name</b>	HSPB1
<b>Synonyms</b>	HSP27, HSP28
<b>Function</b>	Small heat shock protein which functions as a molecular chaperone probably maintaining denatured proteins in a folding-competent state (PubMed: <a href="#">10383393</a> , PubMed: <a href="#">20178975</a> ). Plays a role in stress resistance and actin organization (PubMed: <a href="#">19166925</a> ). Through its molecular chaperone activity may regulate numerous biological processes including the phosphorylation and the axonal transport of neurofilament proteins (PubMed: <a href="#">23728742</a> ).

<b>Cellular Location</b>	Cytoplasm. Nucleus Cytoplasm, cytoskeleton, spindle Note=Cytoplasmic in interphase cells. Colocalizes with mitotic spindles in mitotic cells. Translocates to the nucleus during heat shock and resides in sub-nuclear structures known as SC35 speckles or nuclear splicing speckles.
<b>Tissue Location</b>	Detected in all tissues tested: skeletal muscle, heart, aorta, large intestine, small intestine, stomach, esophagus, bladder, adrenal gland, thyroid, pancreas, testis, adipose tissue, kidney, liver, spleen, cerebral cortex, blood serum and cerebrospinal fluid. Highest levels are found in the heart and in tissues composed of striated and smooth muscle.

## Background

---

Involved in stress resistance and actin organization.

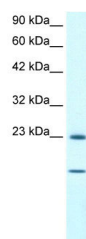
## References

---

Hickey E.,et al.Nucleic Acids Res. 14:4127-4145(1986).  
 Carper S.W.,et al.Nucleic Acids Res. 18:6457-6457(1990).  
 Hino M.,et al.Biochem. Biophys. Res. Commun. 271:164-169(2000).  
 Briolay J.,et al.Submitted (JUN-1993) to the EMBL/GenBank/DDBJ databases.  
 Yu W.,et al.Genome Res. 7:353-358(1997).

## Images

---



WB Suggested Anti-HSPB1 Antibody Titration: 1.0µg/ml  
 Positive Control: HepG2 cell lysate

Please note: All products are 'FOR RESEARCH USE ONLY. NOT FOR USE IN DIAGNOSTIC OR THERAPEUTIC PROCEDURES'.