

HTR3A antibody - N-terminal region

Rabbit Polyclonal Antibody

Catalog # AI16210

Product Information

Application	WB, IHC
Primary Accession	P46098
Other Accession	NM_000869 , NP_000860
Reactivity	Human, Mouse, Rat, Dog, Horse, Bovine
Predicted	Human, Mouse, Rat, Dog, Horse, Bovine
Host	Rabbit
Clonality	Polyclonal
Calculated MW	55280

Additional Information

Gene ID	3359
Alias Symbol	HTR3, 5HT3R, 5-HT-3, 5-HT3A, 5-HT3R
Other Names	5-hydroxytryptamine receptor 3A, 5-HT3-A, 5-HT3A, 5-hydroxytryptamine receptor 3, 5-HT-3, 5-HT3R, Serotonin receptor 3A, Serotonin-gated ion channel receptor, HTR3A, 5HT3R, HTR3
Format	Liquid. Purified antibody supplied in 1x PBS buffer with 0.09% (w/v) sodium azide and 2% sucrose.
Reconstitution & Storage	Add 50 ul of distilled water. Final anti-HTR3A antibody concentration is 1 mg/ml in PBS buffer with 2% sucrose. For longer periods of storage, store at 20°C. Avoid repeat freeze-thaw cycles.
Precautions	HTR3A antibody - N-terminal region is for research use only and not for use in diagnostic or therapeutic procedures.

Protein Information

Name	HTR3A (HGNC:5297)
Synonyms	5HT3R, HTR3
Function	Forms serotonin (5-hydroxytryptamine/5-HT3)-activated cation- selective channel complexes, which when activated cause fast, depolarizing responses in neurons.
Cellular Location	Postsynaptic cell membrane; Multi-pass membrane protein {ECO:0000250 UniProtKB:P23979}. Cell membrane; Multi-pass membrane protein {ECO:0000250 UniProtKB:P23979}

Tissue Location

Expressed in cerebral cortex, amygdala, hippocampus, and testis. Detected in monocytes of the spleen and tonsil, in small and large intestine, uterus, prostate, ovary and placenta.

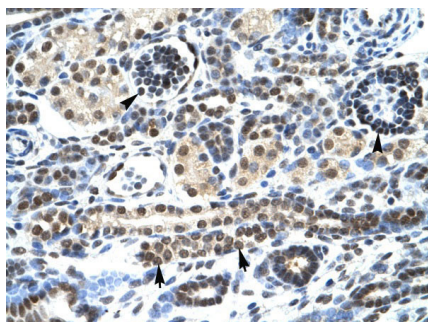
Background

This is one of the several different receptors for 5- hydroxytryptamine (serotonin), a biogenic hormone that functions as a neurotransmitter, a hormone, and a mitogen. This receptor is a ligand-gated ion channel, which when activated causes fast, depolarizing responses in neurons. It is a cation-specific, but otherwise relatively nonselective, ion channel.

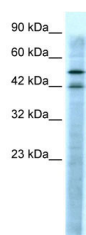
References

Miyake A.,et al.Mol. Pharmacol. 48:407-416(1995).
Belelli D.,et al.Mol. Pharmacol. 48:1054-1062(1995).
Bruess M.,et al.Ann. N. Y. Acad. Sci. 861:234-235(1998).
Bruess M.,et al.Neuropharmacology 39:308-315(2000).
Puhl H.L. III,et al.Submitted (APR-2002) to the EMBL/GenBank/DDBJ databases.

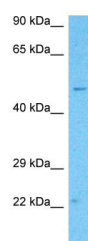
Images



Human kidney



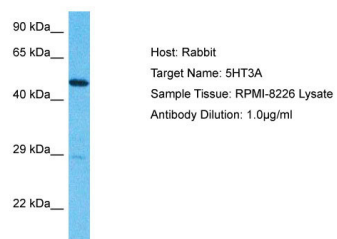
WB Suggested Anti-HTR3A Antibody Titration: 0.2-1 µg/ml
Positive Control: Jurkat cell lysate



Host: Rabbit
Target Name: 5HT3A
Sample Tissue: 721_B Cell Lysate
Antibody Dilution: 5.0µg/ml

Host: Rabbit
Target Name: 5HT3A
Sample Tissue: 721_B Whole Cell lysates
Antibody Dilution: 5µg/ml

Host: Rabbit
Target Name: 5HT3A
Sample Tissue: RPMI-8226 lysates



Antibody Dilution: 1.0µg/ml

Host: Rabbit
Target Name: 5HT3A
Sample Tissue: RPMI-8226 Lysate
Antibody Dilution: 1.0µg/ml

Please note: All products are 'FOR RESEARCH USE ONLY. NOT FOR USE IN DIAGNOSTIC OR THERAPEUTIC PROCEDURES'.