

# DEK antibody - middle region

Rabbit Polyclonal Antibody

Catalog # AI16221

## Product Information

---

<b>Application</b>	WB
<b>Primary Accession</b>	<a href="#">P35659</a>
<b>Other Accession</b>	<a href="#">NM_003472</a> , <a href="#">NP_003463</a>
<b>Reactivity</b>	Human, Mouse, Rat, Rabbit, Pig, Guinea Pig, Horse, Bovine
<b>Predicted</b>	Human, Mouse, Rat, Rabbit, Pig, Chicken, Guinea Pig, Horse, Bovine
<b>Host</b>	Rabbit
<b>Clonality</b>	Polyclonal
<b>Calculated MW</b>	42674

## Additional Information

---

<b>Gene ID</b>	7913
<b>Alias Symbol</b>	D6S231E
<b>Other Names</b>	Protein DEK, DEK
<b>Format</b>	Liquid. Purified antibody supplied in 1x PBS buffer with 0.09% (w/v) sodium azide and 2% sucrose.
<b>Reconstitution &amp; Storage</b>	Add 50 ul of distilled water. Final anti-DEK antibody concentration is 1 mg/ml in PBS buffer with 2% sucrose. For longer periods of storage, store at 20°C. Avoid repeat freeze-thaw cycles.
<b>Precautions</b>	DEK antibody - middle region is for research use only and not for use in diagnostic or therapeutic procedures.

## Protein Information

---

<b>Name</b>	DEK
<b>Function</b>	Involved in chromatin organization.
<b>Cellular Location</b>	Nucleus. Note=Enriched in regions where chromatin is decondensed or sparse in the interphase nuclei
<b>Tissue Location</b>	Ubiquitous. Expressed at relatively high levels.

## Background

---

Involved in chromatin organization.

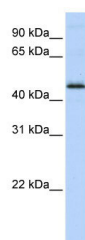
## References

---

Von Lindern M.,et al.Mol. Cell. Biol. 12:1687-1697(1992).  
Ota T.,et al.Nat. Genet. 36:40-45(2004).  
Mungall A.J.,et al.Nature 425:805-811(2003).  
Mural R.J.,et al.Submitted (JUL-2005) to the EMBL/GenBank/DDBJ databases.  
Bienvenut W.V.,et al.Submitted (DEC-2008) to UniProtKB.

## Images

---



WB Suggested Anti-DEK Antibody Titration: 0.2-1 µg/ml  
ELISA Titer: 1:1562500  
Positive Control: MCF7 cell lysate

Please note: All products are 'FOR RESEARCH USE ONLY. NOT FOR USE IN DIAGNOSTIC OR THERAPEUTIC PROCEDURES'.