

# AREB6 antibody - N-terminal region

Rabbit Polyclonal Antibody

Catalog # AI16228

## Product Information

Application	WB
Primary Accession	<a href="#">P37275</a>
Other Accession	<a href="#">NM_030751</a> , <a href="#">NP_110378</a>
Reactivity	Human
Host	Rabbit
Clonality	Polyclonal
Calculated MW	124074

## Additional Information

Gene ID	6935
Alias Symbol	AREB6, BZP, MGC133261, NIL-2-A, NIL-2A, TCF8, ZEB, ZFHEP, ZFH1A, FECD6, NIL2A, PPCD3, DELTAEF1
Other Names	Zinc finger E-box-binding homeobox 1, NIL-2-A zinc finger protein, Negative regulator of IL2, Transcription factor 8, TCF-8, ZEB1, AREB6, TCF8
Format	Liquid. Purified antibody supplied in 1x PBS buffer with 0.09% (w/v) sodium azide and 2% sucrose.
Reconstitution & Storage	Add 100 ul of distilled water. Final anti-AREB6 antibody concentration is 1 mg/ml in PBS buffer with 2% sucrose. For longer periods of storage, store at 20°C. Avoid repeat freeze-thaw cycles.
Precautions	AREB6 antibody - N-terminal region is for research use only and not for use in diagnostic or therapeutic procedures.

## Protein Information

Name	ZEB1 ( <a href="#">HGNC:11642</a> )
Function	Acts as a transcriptional repressor. Inhibits interleukin-2 (IL-2) gene expression. Enhances or represses the promoter activity of the ATP1A1 gene depending on the quantity of cDNA and on the cell type. Represses E-cadherin promoter and induces an epithelial-mesenchymal transition (EMT) by recruiting SMARCA4/BRG1. Represses BCL6 transcription in the presence of the corepressor CTBP1. Positively regulates neuronal differentiation. Represses RCOR1 transcription activation during neurogenesis. Represses transcription by binding to the E box (5'-CANNTG-3'). In the absence of TGFβ1, acts as a repressor of COL1A2 transcription via binding to the E-box in the upstream enhancer region (By similarity).

<b>Cellular Location</b>	Nucleus
<b>Tissue Location</b>	Colocalizes with SMARCA4/BRG1 in E-cadherin- negative cells from established lines, and stroma of normal colon as well as in de-differentiated epithelial cells at the invasion front of colorectal carcinomas (at protein level). Expressed in heart and skeletal muscle, but not in liver, spleen, or pancreas

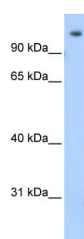
## Background

Acts as a transcriptional repressor. Inhibits interleukin-2 (IL-2) gene expression. Enhances or represses the promoter activity of the ATP1A1 gene depending on the quantity of cDNA and on the cell type. Represses E-cadherin promoter and induces an epithelial-mesenchymal transition (EMT) by recruiting SMARCA4/BRG1. Represses BCL6 transcription in the presence of the corepressor CTBP1. Positively regulates neuronal differentiation. Represses RCOR1 transcription activation during neurogenesis. Represses transcription by binding to the E box (5'-CANNTG-3'). Promotes tumorigenicity by repressing stemness-inhibiting microRNAs.

## References

Watanabe Y.,et al.J. Biochem. 114:849-855(1993).  
 Bachman N.J.,et al.Submitted (JUL-1994) to the EMBL/GenBank/DDBJ databases.  
 Ota T.,et al.Nat. Genet. 36:40-45(2004).  
 Deloukas P.,et al.Nature 429:375-381(2004).  
 Mural R.J.,et al.Submitted (SEP-2005) to the EMBL/GenBank/DDBJ databases.

## Images



Host: Rabbit  
 Target Name: AREB6  
 Sample Tissue:Human Fetal Muscle cell lysate  
 s  
 Antibody Dilution: 1.0µg/ml

Please note: All products are 'FOR RESEARCH USE ONLY. NOT FOR USE IN DIAGNOSTIC OR THERAPEUTIC PROCEDURES'.