

CREB5 antibody - N-terminal region

Rabbit Polyclonal Antibody

Catalog # AI16237

Product Information

Application	WB
Primary Accession	Q02930
Other Accession	NM_182899 , NP_878902
Reactivity	Human, Mouse, Rat, Rabbit, Pig, Dog, Guinea Pig, Horse
Predicted	Human, Mouse, Rat, Rabbit, Pig, Chicken, Dog, Guinea Pig, Horse
Host	Rabbit
Clonality	Polyclonal
Calculated MW	56918

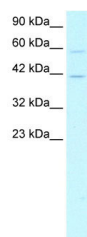
Additional Information

Gene ID	9586
Alias Symbol	CRE-BPA
Other Names	Cyclic AMP-responsive element-binding protein 5, CREB-5, cAMP-responsive element-binding protein 5, CRE-BPa, CREB5, CREBPA
Format	Liquid. Purified antibody supplied in 1x PBS buffer with 0.09% (w/v) sodium azide and 2% sucrose.
Reconstitution & Storage	Add 100 ul of distilled water. Final anti-CREB5 antibody concentration is 1 mg/ml in PBS buffer with 2% sucrose. For longer periods of storage, store at 20°C. Avoid repeat freeze-thaw cycles.
Precautions	CREB5 antibody - N-terminal region is for research use only and not for use in diagnostic or therapeutic procedures.

Protein Information

Name	CREB5
Synonyms	CREBPA
Function	Binds to the cAMP response element and activates transcription.
Cellular Location	Nucleus.

Images



WB Suggested Anti-CREB5 Antibody Titration: 1.25µg/ml
Positive Control: HepG2 cell lysate

Please note: All products are 'FOR RESEARCH USE ONLY. NOT FOR USE IN DIAGNOSTIC OR THERAPEUTIC PROCEDURES'.