

NR2F2 antibody - N-terminal region

Rabbit Polyclonal Antibody

Catalog # AI16245

Product Information

Application	WB, IHC
Primary Accession	P24468
Other Accession	NM_021005 , NP_066285
Reactivity	Human, Mouse, Rat, Rabbit, Pig, Dog, Bovine, Sheep
Predicted	Human, Mouse, Rat, Rabbit, Pig, Chicken, Dog, Bovine, Sheep
Host	Rabbit
Clonality	Polyclonal
Calculated MW	45571

Additional Information

Gene ID	7026
Alias Symbol	ARP1, COUP-TFII, COUPTFB, MGC117452, SVP40, TFCOUP2, NF-E3, NR2F1, COUPTFII
Other Names	COUP transcription factor 2, COUP-TF2, Apolipoprotein A-I regulatory protein 1, ARP-1, COUP transcription factor II, COUP-TF II, Nuclear receptor subfamily 2 group F member 2, NR2F2, ARP1, TFCOUP2
Format	Liquid. Purified antibody supplied in 1x PBS buffer with 0.09% (w/v) sodium azide and 2% sucrose.
Reconstitution & Storage	Add 50 ul of distilled water. Final anti-NR2F2 antibody concentration is 1 mg/ml in PBS buffer with 2% sucrose. For longer periods of storage, store at 20°C. Avoid repeat freeze-thaw cycles.
Precautions	NR2F2 antibody - N-terminal region is for research use only and not for use in diagnostic or therapeutic procedures.

Protein Information

Name	NR2F2
Synonyms	ARP1, TFCOUP2
Function	Ligand-activated transcription factor. Activated by high concentrations of 9-cis-retinoic acid and all-trans-retinoic acid, but not by dexamethasone, cortisol or progesterone (in vitro). Regulation of the apolipoprotein A-I gene transcription. Binds to DNA site A. May be required to establish ovary identity during early gonad development (PubMed: 29478779).

Cellular Location

Nucleus.

Tissue Location

Ubiquitous. Expressed in the stromal cells of developing fetal ovaries (PubMed:29478779)

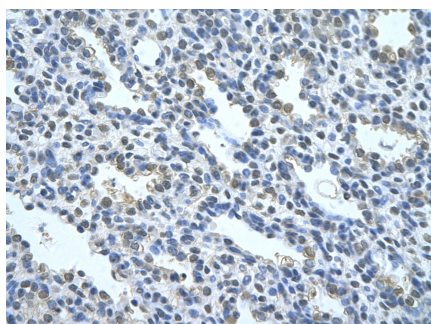
Background

Ligand-activated transcription factor. Activated by high concentrations of 9-cis-retinoic acid and all-trans-retinoic acid, but not by dexamethasone, cortisol or progesterone (in vitro). Regulation of the apolipoprotein A-I gene transcription. Binds to DNA site A.

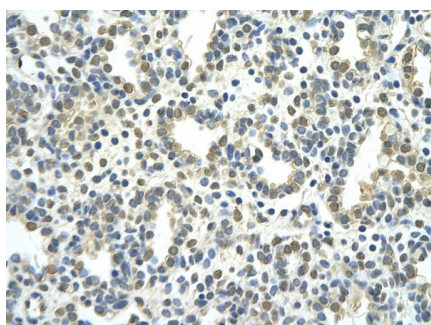
References

Ladias J.A.A.,et al.Science 251:561-565(1991).
Speckmayer R.W.M.,et al.Submitted (OCT-1996) to the EMBL/GenBank/DDBJ databases.
Kobayashi T.,et al.FEBS Lett. 582:2737-2744(2008).
Schote A.B.,et al.Submitted (AUG-2008) to the EMBL/GenBank/DDBJ databases.
Ota T.,et al.Nat. Genet. 36:40-45(2004).

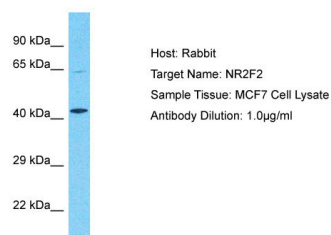
Images



Rabbit Anti-NR2F2 Antibody
Paraffin Embedded Tissue: Human alveolar cell
Cellular Data: Epithelial cells of renal tubule
Antibody Concentration: 4.0-8.0 µg/ml
Magnification: 400X

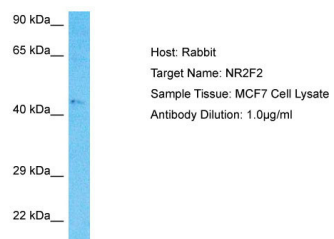


Rabbit Anti-NR2F2 antibody
Paraffin Embedded Tissue: Human Lung cell
Cellular Data: alveolar cell
Antibody Concentration: 4.0-8.0 µg/ml
Magnification: 400X



Host: Rabbit
Target Name: NR2F2
Sample Tissue: MCF7 Whole cell lysate
S
Antibody Dilution: 1.0µg/ml

Host: Rabbit
Target Name: NR2F2



Host: Rabbit
Target Name: NR2F2
Sample Tissue: MCF7 Cell Lysate
Antibody Dilution: 1.0µg/ml

Sample Tissue: MCF7 Whole cell lysate
S
Antibody Dilution: 1.0µg/ml

Please note: All products are 'FOR RESEARCH USE ONLY. NOT FOR USE IN DIAGNOSTIC OR THERAPEUTIC PROCEDURES'.