

GATA1 antibody - N-terminal region

Rabbit Polyclonal Antibody

Catalog # AI16247

Product Information

Application	WB
Primary Accession	P15976
Other Accession	NM_002049 , NP_002040
Reactivity	Human, Mouse, Rat, Rabbit, Dog, Guinea Pig, Bovine, Sheep
Predicted	Human, Mouse, Rat, Rabbit, Dog, Guinea Pig, Bovine, Sheep
Host	Rabbit
Clonality	Polyclonal
Calculated MW	42751

Additional Information

Gene ID	2623
Alias Symbol	ERYF1, GF1, NFE1, GF-1, XLTT, GATA-1
Other Names	Erythroid transcription factor, Eryf1, GATA-binding factor 1, GATA-1, GF-1, NF-E1 DNA-binding protein, GATA1, ERYF1, GF1
Format	Liquid. Purified antibody supplied in 1x PBS buffer with 0.09% (w/v) sodium azide and 2% sucrose.
Reconstitution & Storage	Add 50 ul of distilled water. Final anti-GATA1 antibody concentration is 1 mg/ml in PBS buffer with 2% sucrose. For longer periods of storage, store at 20°C. Avoid repeat freeze-thaw cycles.
Precautions	GATA1 antibody - N-terminal region is for research use only and not for use in diagnostic or therapeutic procedures.

Protein Information

Name	GATA1
Synonyms	ERYF1, GF1
Function	Transcriptional activator or repressor which serves as a general switch factor for erythroid development (PubMed: 35030251). It binds to DNA sites with the consensus sequence 5'-[AT]GATA[AG]-3' within regulatory regions of globin genes and of other genes expressed in erythroid cells. Activates the transcription of genes involved in erythroid differentiation of K562 erythroleukemia cells, including HBB, HBG1/2, ALAS2 and HMBS (PubMed: 24245781).

Cellular Location	Nucleus.
Tissue Location	Erythrocytes..

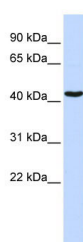
Background

Transcriptional activator or repressor which probably serves as a general switch factor for erythroid development. It binds to DNA sites with the consensus sequence 5'-[AT]GATA[AG]-3' within regulatory regions of globin genes and of other genes expressed in erythroid cells.

References

Trainor C.D.,et al.Nature 343:92-96(1990).
Zon L.I.,et al.Proc. Natl. Acad. Sci. U.S.A. 87:668-672(1990).
Ross M.T.,et al.Nature 434:325-337(2005).
Calligaris R.,et al.Proc. Natl. Acad. Sci. U.S.A. 92:11598-11602(1995).
Boyes J.,et al.Nature 396:594-598(1998).

Images



WB Suggested Anti-GATA1 Antibody Titration: 0.2-1 µg/ml
ELISA Titer: 1:312500
Positive Control: MCF7 cell lysate

Please note: All products are 'FOR RESEARCH USE ONLY. NOT FOR USE IN DIAGNOSTIC OR THERAPEUTIC PROCEDURES'.