

GCM1 antibody - N-terminal region

Rabbit Polyclonal Antibody
Catalog # AI16248

Product Information

Application	WB, IHC
Primary Accession	Q9NP62
Other Accession	NM_003643 , NP_003634
Reactivity	Human, Mouse, Rat, Dog
Predicted	Human, Mouse, Rat, Dog
Host	Rabbit
Clonality	Polyclonal
Calculated MW	49268

Additional Information

Gene ID	8521
Alias Symbol	GCMA, hGCMA
Other Names	Chorion-specific transcription factor GCMA, hGCMA, GCM motif protein 1, Glial cells missing homolog 1, GCM1, GCMA
Format	Liquid. Purified antibody supplied in 1x PBS buffer with 0.09% (w/v) sodium azide and 2% sucrose.
Reconstitution & Storage	Add 50 ul of distilled water. Final anti-GCM1 antibody concentration is 1 mg/ml in PBS buffer with 2% sucrose. For longer periods of storage, store at 20°C. Avoid repeat freeze-thaw cycles.
Precautions	GCM1 antibody - N-terminal region is for research use only and not for use in diagnostic or therapeutic procedures.

Protein Information

Name	GCM1
Synonyms	GCMA
Function	Transcription factor involved in the control of expression of placental growth factor (PGF) and other placenta-specific genes (PubMed: 10542267 , PubMed: 18160678). Binds to the trophoblast-specific element 2 (TSE2) of the aromatase gene enhancer (PubMed: 10542267). Binds to the SYDE1 promoter (PubMed: 27917469). Has a central role in mediating the differentiation of trophoblast cells along both the villous and extravillous pathways in placental development (PubMed: 19219068).

Cellular Location Nucleus {ECO:0000255 | PROSITE-ProRule:PRU00245}.

Tissue Location Highly expressed in the placenta (PubMed:10542267). Expressed in trophoblast cells of the villi (PubMed:27917469)

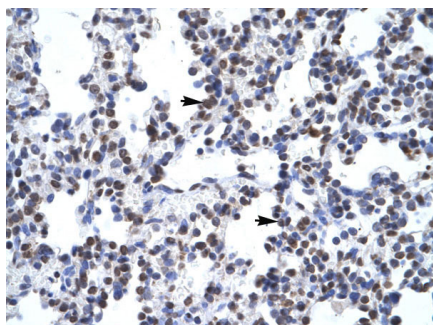
Background

Transcription factor that is necessary for placental development. Binds to the trophoblast-specific element 2 (TSE2) of the aromatase gene enhancer.

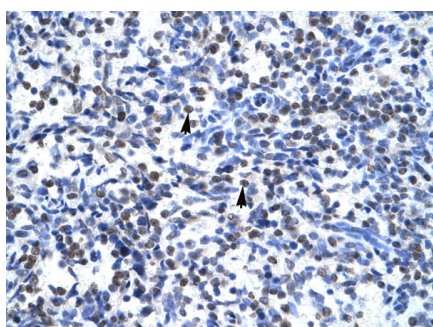
References

Akiyama Y.,et al.Proc. Natl. Acad. Sci. U.S.A. 93:14912-14916(1996).
Nishizawa M.,et al.Submitted (APR-2000) to the EMBL/GenBank/DDBJ databases.
Yamada K.,et al.J. Biol. Chem. 274:32279-32286(1999).
Yamada K.,et al.Biochem. Biophys. Res. Commun. 278:134-139(2000).
Mungall A.J.,et al.Nature 425:805-811(2003).

Images



Human Lung

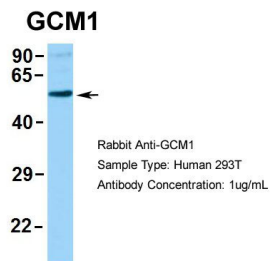


Human Spleen



WB Suggested Anti-GCM1 Antibody Titration: 0.2-1 µg/ml
ELISA Titer: 1:7812500
Positive Control: Human Placenta

Human 293T



Please note: All products are 'FOR RESEARCH USE ONLY. NOT FOR USE IN DIAGNOSTIC OR THERAPEUTIC PROCEDURES'.