

# LHX1 antibody - C-terminal region

Rabbit Polyclonal Antibody

Catalog # AI16250

## Product Information

---

<b>Application</b>	WB, IHC
<b>Primary Accession</b>	<a href="#">P48742</a>
<b>Other Accession</b>	<a href="#">NM_005568</a> , <a href="#">NP_005559</a>
<b>Reactivity</b>	Human, Mouse, Rat, Bovine
<b>Predicted</b>	Human, Mouse, Rat, Chicken, Bovine
<b>Host</b>	Rabbit
<b>Clonality</b>	Polyclonal
<b>Calculated MW</b>	44808

## Additional Information

---

<b>Gene ID</b>	3975
<b>Alias Symbol</b>	LIM1, LIM-1
<b>Other Names</b>	LIM/homeobox protein Lhx1, LIM homeobox protein 1, Homeobox protein Lim-1, hLim-1, LHX1, LIM-1, LIM1
<b>Format</b>	Liquid. Purified antibody supplied in 1x PBS buffer with 0.09% (w/v) sodium azide and 2% sucrose.
<b>Reconstitution &amp; Storage</b>	Add 100 ul of distilled water. Final anti-LHX1 antibody concentration is 1 mg/ml in PBS buffer with 2% sucrose. For longer periods of storage, store at 20°C. Avoid repeat freeze-thaw cycles.
<b>Precautions</b>	LHX1 antibody - C-terminal region is for research use only and not for use in diagnostic or therapeutic procedures.

## Protein Information

---

<b>Name</b>	LHX1
<b>Synonyms</b>	LIM-1, LIM1
<b>Function</b>	Potential transcription factor. May play a role in early mesoderm formation and later in lateral mesoderm differentiation and neurogenesis.
<b>Cellular Location</b>	Nucleus.
<b>Tissue Location</b>	Expressed in the brain, thymus, and tonsils. Expressed in samples from patients with chronic myeloid leukemia (CML) and in 58% of acute myeloid leukemia (AML) cell lines

## Background

---

Potential transcription factor. May play a role in early mesoderm formation and later in lateral mesoderm differentiation and neurogenesis.

## References

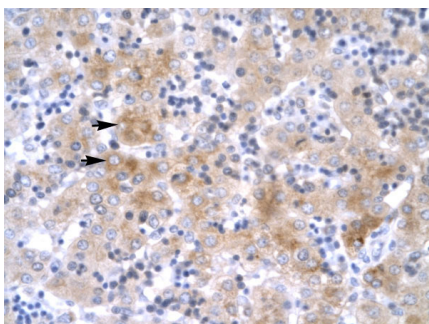
---

Dong W.F.,et al.DNA Cell Biol. 16:671-678(1997).

Zody M.C.,et al.Nature 440:1045-1049(2006).

## Images

---



Human Liver



WB Suggested Anti-LHX1 Antibody Titration: 0.4µg/ml  
Positive Control: HepG2 cell lysate

Please note: All products are 'FOR RESEARCH USE ONLY. NOT FOR USE IN DIAGNOSTIC OR THERAPEUTIC PROCEDURES'.