

ELK3 antibody - middle region

Rabbit Polyclonal Antibody

Catalog # AI16251

Product Information

Application	WB
Primary Accession	P41970
Other Accession	NM_005230 , NP_005221
Reactivity	Human, Mouse, Rat, Rabbit, Dog, Guinea Pig, Horse, Bovine
Predicted	Human, Mouse, Rat, Rabbit, Chicken, Dog, Guinea Pig, Horse, Bovine
Host	Rabbit
Clonality	Polyclonal
Calculated MW	44240

Additional Information

Gene ID	2004
Alias Symbol	ERP, NET, SAP2
Other Names	ETS domain-containing protein Elk-3, ETS-related protein ERP, ETS-related protein NET, Serum response factor accessory protein 2, SAP-2, SRF accessory protein 2, ELK3, NET, SAP2
Format	Liquid. Purified antibody supplied in 1x PBS buffer with 0.09% (w/v) sodium azide and 2% sucrose.
Reconstitution & Storage	Add 50 ul of distilled water. Final anti-ELK3 antibody concentration is 1 mg/ml in PBS buffer with 2% sucrose. For longer periods of storage, store at 20°C. Avoid repeat freeze-thaw cycles.
Precautions	ELK3 antibody - middle region is for research use only and not for use in diagnostic or therapeutic procedures.

Protein Information

Name	ELK3
Synonyms	NET, SAP2
Function	May be a negative regulator of transcription, but can activate transcription when coexpressed with Ras, Src or Mos. Forms a ternary complex with the serum response factor and the ETS and SRF motifs of the Fos serum response element.
Cellular Location	Nucleus.

Background

May be a negative regulator of transcription, but can activate transcription when coexpressed with Ras, Src or Mos. Forms a ternary complex with the serum response factor and the ETS and SRF motifs of the Fos serum response element.

References

Giovane A.,et al.Genes Dev. 8:1502-1513(1994).

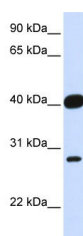
Price M.A.,et al.EMBO J. 14:2589-2601(1995).

Ebert L.,et al.Submitted (JUN-2004) to the EMBL/GenBank/DDBJ databases.

Ota T.,et al.Nat. Genet. 36:40-45(2004).

Mural R.J.,et al.Submitted (JUL-2005) to the EMBL/GenBank/DDBJ databases.

Images



WB Suggested Anti-ELK3 Antibody Titration: 0.2-1 µg/ml

ELISA Titer: 1:62500

Positive Control: Human heart

Please note: All products are 'FOR RESEARCH USE ONLY. NOT FOR USE IN DIAGNOSTIC OR THERAPEUTIC PROCEDURES'.