

ELF1 antibody - middle region

Rabbit Polyclonal Antibody
Catalog # AI16254

Product Information

Application	WB
Primary Accession	P32519
Other Accession	NM_172373 , NP_758961
Reactivity	Human, Rabbit, Horse
Predicted	Human, Rabbit, Horse
Host	Rabbit
Clonality	Polyclonal
Calculated MW	67 KDa

Additional Information

Other Names	ETS-related transcription factor Elf-1, E74-like factor 1, ELF1
Format	Liquid. Purified antibody supplied in 1x PBS buffer with 0.09% (w/v) sodium azide and 2% sucrose.
Reconstitution & Storage	Add 50 ul of distilled water. Final anti-ELF1 antibody concentration is 1 mg/ml in PBS buffer with 2% sucrose. For longer periods of storage, store at 20°C. Avoid repeat freeze-thaw cycles.
Precautions	ELF1 antibody - middle region is for research use only and not for use in diagnostic or therapeutic procedures.

Protein Information

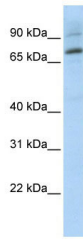
Background

Transcription factor that activates the LYN and BLK promoters. Appears to be required for the T-cell-receptor-mediated trans activation of HIV-2 gene expression. Binds specifically to two purine-rich motifs in the HIV-2 enhancer.

References

- Leiden J.M.,et al.J. Virol. 66:5890-5897(1992).
Ota T.,et al.Nat. Genet. 36:40-45(2004).
Dunham A.,et al.Nature 428:522-528(2004).
Mural R.J.,et al.Submitted (JUL-2005) to the EMBL/GenBank/DDBJ databases.
Thompson C.B.,et al.Mol. Cell. Biol. 12:1043-1053(1992).

Images



WB Suggested Anti-ELF1 Antibody Titration: 0.2-1 $\mu\text{g/ml}$
ELISA Titer: 1:12500
Positive Control: Transfected 293T

Please note: All products are 'FOR RESEARCH USE ONLY. NOT FOR USE IN DIAGNOSTIC OR THERAPEUTIC PROCEDURES'.