

# OTX1 antibody - C-terminal region

Rabbit Polyclonal Antibody

Catalog # AI16266

## Product Information

---

<b>Application</b>	WB
<b>Primary Accession</b>	<a href="#">P32242</a>
<b>Other Accession</b>	<a href="#">NM_014562</a> , <a href="#">NP_055377</a>
<b>Reactivity</b>	Human, Mouse, Rat, Rabbit, Dog, Guinea Pig, Bovine
<b>Predicted</b>	Human, Mouse, Rat, Rabbit, Dog, Guinea Pig, Bovine
<b>Host</b>	Rabbit
<b>Clonality</b>	Polyclonal
<b>Calculated MW</b>	37327

## Additional Information

---

<b>Gene ID</b>	5013
<b>Alias Symbol</b>	FLJ38361, MGC15736
<b>Other Names</b>	Homeobox protein OTX1, Orthodenticle homolog 1, OTX1
<b>Format</b>	Liquid. Purified antibody supplied in 1x PBS buffer with 0.09% (w/v) sodium azide and 2% sucrose.
<b>Reconstitution &amp; Storage</b>	Add 50 ul of distilled water. Final anti-OTX1 antibody concentration is 1 mg/ml in PBS buffer with 2% sucrose. For longer periods of storage, store at 20°C. Avoid repeat freeze-thaw cycles.
<b>Precautions</b>	OTX1 antibody - C-terminal region is for research use only and not for use in diagnostic or therapeutic procedures.

## Protein Information

---

<b>Name</b>	OTX1
<b>Function</b>	Probably plays a role in the development of the brain and the sense organs. Can bind to the BCD target sequence (BTS): 5'-TCTAATCCC- 3'.
<b>Cellular Location</b>	Nucleus.
<b>Tissue Location</b>	Expressed in brain. Detected in the anterior part of the neural fetal retina (at protein level)

## Background

---

Probably plays a role in the development of the brain and the sense organs. Can bind to the BCD target sequence (BTS): 5'-TCTAATCCC-3'.

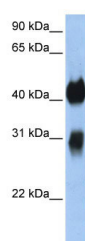
## References

---

Simeone A.,et al.EMBO J. 12:2735-2747(1993).  
Ota T.,et al.Nat. Genet. 36:40-45(2004).  
Hillier L.W.,et al.Nature 434:724-731(2005).  
Mural R.J.,et al.Submitted (SEP-2005) to the EMBL/GenBank/DDBJ databases.  
Larsen K.B.,et al.Int. J. Dev. Neurosci. 27:485-492(2009).

## Images

---



WB Suggested Anti-OTX1 Antibody Titration: 0.2-1 µg/ml  
Positive Control: Transfected 293T

Please note: All products are 'FOR RESEARCH USE ONLY. NOT FOR USE IN DIAGNOSTIC OR THERAPEUTIC PROCEDURES'.