

# SPP1 / Osteopontin Antibody (N-Terminus)

Rabbit Polyclonal Antibody

Catalog # ALS16768

## Product Information

---

<b>Application</b>	WB, IHC-P, IF, E
<b>Primary Accession</b>	<a href="#">P10451</a>
<b>Other Accession</b>	<a href="#">6696</a>
<b>Reactivity</b>	Human, Mouse, Rat
<b>Host</b>	Rabbit
<b>Clonality</b>	Polyclonal
<b>Isotype</b>	IgG
<b>Calculated MW</b>	35423
<b>Dilution</b>	IF (20 $\mu$ g/ml), IHC-P (10 $\mu$ g/ml), WB (1 - 2 $\mu$ g/ml),
<b>Concentration (mg/ml)</b>	1 mg/ml

## Additional Information

---

<b>Gene ID</b>	6696
<b>Other Names</b>	SPP1, BSPI, BNSP, Bone sialoprotein 1, ETA-1, Nephropontin, OPN, Secreted phosphoprotein 1, SPP-1, SPP1/CALPHA1 fusion, Urinary stone protein, Uropontin, Osteopontin, Bone sialoprotein I
<b>Target/Specificity</b>	SPP1 antibody is human, mouse and rat reactive. Multiple isoforms of SPP1 are known to exist.
<b>Reconstitution &amp; Storage</b>	PBS, 0.02% sodium azide. Long term: -20°C; Short term: +4°C. Avoid repeat freeze-thaw cycles.
<b>Precautions</b>	SPP1 / Osteopontin Antibody (N-Terminus) is for research use only and not for use in diagnostic or therapeutic procedures.

## Protein Information

---

<b>Name</b>	SPP1
<b>Synonyms</b>	BNSP, OPN
<b>Function</b>	Major non-collagenous bone protein that binds tightly to hydroxyapatite. Appears to form an integral part of the mineralized matrix. Probably important to cell-matrix interaction.
<b>Cellular Location</b>	Secreted
<b>Tissue Location</b>	Detected in cerebrospinal fluid and urine (at protein level)

(PubMed:25326458, PubMed:36213313, PubMed:37453717) Bone. Found in plasma.

Volume

Array

## Background

---

Binds tightly to hydroxyapatite. Appears to form an integral part of the mineralized matrix. Probably important to cell-matrix interaction.

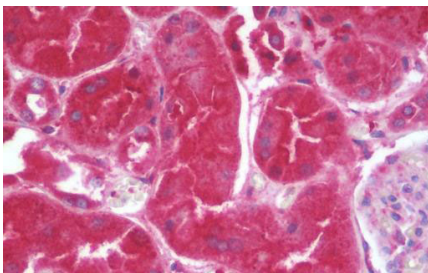
## References

---

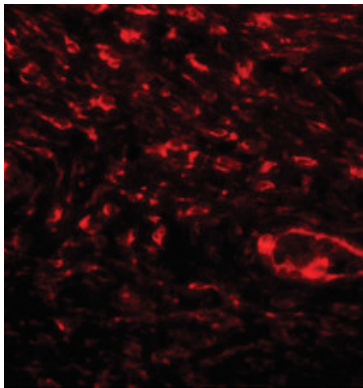
Kiefer M.C.,et al.Nucleic Acids Res. 17:3306-3306(1989).  
Young M.F.,et al.Genomics 7:491-502(1990).  
Shiraga H.,et al.Proc. Natl. Acad. Sci. U.S.A. 89:426-430(1992).  
Crosby A.H.,et al.Genomics 27:155-160(1995).  
Hijiya N.,et al.Biochem. J. 303:255-262(1994).

## Images

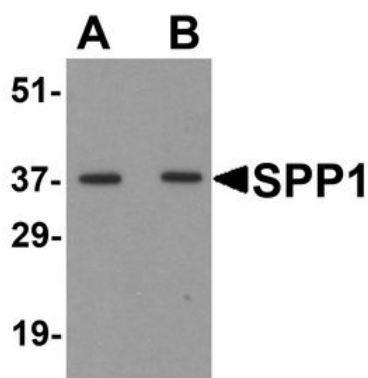
---



Anti-SPP1 / Osteopontin antibody IHC staining of human kidney.



Immunofluorescence of SPP1 in human bladder tissue with SPP1 antibody at 20 ug/ml.



Please note: All products are 'FOR RESEARCH USE ONLY. NOT FOR USE IN DIAGNOSTIC OR THERAPEUTIC PROCEDURES'.