

Anti-RELN / Reelin Antibody

Rabbit Anti Human Polyclonal Antibody
Catalog # ALS17266

Product Information

Application	WB, IHC-P, E
Primary Accession	P78509
Predicted	Human
Host	Rabbit
Clonality	Polyclonal
Isotype	IgG
Calculated MW	388388
Concentration (mg/ml)	1 mg/ml

Additional Information

Gene ID	5649
Alias Symbol	RELN
Other Names	RELN, LIS2, PRO1598, Reelin, RL
Target/Specificity	Human RELN / Reelin
Reconstitution & Storage	PBS, pH 7.4, 0.03% Proclin 300, 50% glycerol. Long term: -20°C; Short term: +4°C. Avoid repeat freeze-thaw cycles.
Precautions	Anti-RELN / Reelin Antibody is for research use only and not for use in diagnostic or therapeutic procedures.

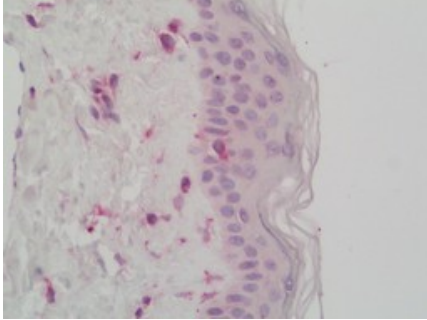
Protein Information

Name	RELN
Function	Extracellular matrix serine protease secreted by pioneer neurons that plays a role in layering of neurons in the cerebral cortex and cerebellum by coordinating cell positioning during neurodevelopment. Regulates microtubule function in neurons and neuronal migration. Binding to the extracellular domains of lipoprotein receptors VLDLR and LRP8/APOER2 induces tyrosine phosphorylation of DAB1 and modulation of TAU phosphorylation. Affects migration of sympathetic preganglionic neurons in the spinal cord, where it seems to act as a barrier to neuronal migration. Enzymatic activity is important for the modulation of cell adhesion.
Cellular Location	Secreted, extracellular space, extracellular matrix {ECO:0000250 UniProtKB:Q60841}

Tissue Location

Abundantly produced during brain ontogenesis by the Cajal-Retzius cells and other pioneer neurons located in the telencephalic marginal zone and by granule cells of the external granular layer of the cerebellum. In adult brain, preferentially expressed in GABAergic interneurons of prefrontal cortices, temporal cortex, hippocampus and glutamatergic granule cells of cerebellum. Expression is reduced to about 50% in patients with schizophrenia. Also expressed in fetal and adult liver.

Images



Human Skin: Formalin-Fixed, Paraffin-Embedded (FFPE)

Please note: All products are 'FOR RESEARCH USE ONLY. NOT FOR USE IN DIAGNOSTIC OR THERAPEUTIC PROCEDURES'.