

Anti-GC / Vitamin D-Binding Protein Antibody

Rabbit Anti Human Polyclonal Antibody
Catalog # ALS17284

Product Information

Application	WB, IHC-P, E
Primary Accession	P02774
Predicted	Human
Host	Rabbit
Clonality	Polyclonal
Isotype	IgG
Calculated MW	52918

Additional Information

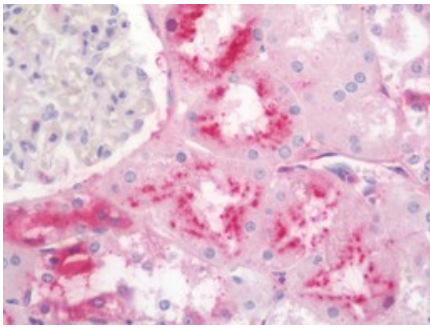
Gene ID	2638
Alias Symbol	GC
Other Names	GC, Gc-globulin, HDBP, Group-specific component, GRD3, VDB, VDBG, VDBP, Vitamin D-binding protein
Target/Specificity	Human GC / Vitamin D-Binding Protein
Reconstitution & Storage	PBS, pH 7.4, 0.03% Proclin 300, 50% glycerol. Long term: -20°C; Short term: +4°C. Avoid repeat freeze-thaw cycles.
Precautions	Anti-GC / Vitamin D-Binding Protein Antibody is for research use only and not for use in diagnostic or therapeutic procedures.

Protein Information

Name	GC
Function	Involved in vitamin D transport and storage, scavenging of extracellular G-actin, enhancement of the chemotactic activity of C5 alpha for neutrophils in inflammation and macrophage activation.
Cellular Location	Secreted.
Tissue Location	Expressed in the liver. Found in plasma, ascites, cerebrospinal fluid and urine.

Images

Human Kidney: Formalin-Fixed, Paraffin-Embedded (FFPE)



Please note: All products are 'FOR RESEARCH USE ONLY. NOT FOR USE IN DIAGNOSTIC OR THERAPEUTIC PROCEDURES'.