

Anti-Complement C3 Antibody

Rabbit Anti Human Polyclonal Antibody

Catalog # ALS17285

Product Information

Application	WB, IHC-P, E
Primary Accession	P01024
Predicted	Human
Host	Rabbit
Clonality	Polyclonal
Isotype	IgG
Calculated MW	187148
Concentration (mg/ml)	1 mg/ml

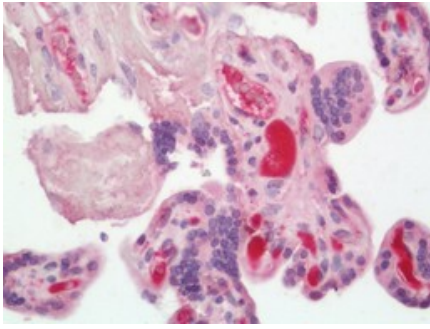
Additional Information

Gene ID	718
Alias Symbol	C3
Other Names	C3, AHUS5, ARMD9, Complement component C3, CPAMD1, Complement C3, ASP, Complement component 3
Target/Specificity	Human Complement C3
Reconstitution & Storage	PBS, pH 7.4, 0.03% Proclin 300, 50% glycerol. Long term: -20°C; Short term: +4°C. Avoid repeat freeze-thaw cycles.
Precautions	Anti-Complement C3 Antibody is for research use only and not for use in diagnostic or therapeutic procedures.

Protein Information

Name	C3 {ECO:0000303 PubMed:2579379, ECO:0000312 HGNC:HGNC:1318}
Function	Precursor of non-enzymatic components of the classical, alternative, lectin and GZMK complement pathways, which consist in a cascade of proteins that leads to phagocytosis and breakdown of pathogens and signaling that strengthens the adaptive immune system.
Cellular Location	Secreted. [C3a anaphylatoxin]: Secreted
Tissue Location	Plasma..

Images



Human Placenta: Formalin-Fixed, Paraffin-Embedded (FFPE)

Please note: All products are 'FOR RESEARCH USE ONLY. NOT FOR USE IN DIAGNOSTIC OR THERAPEUTIC PROCEDURES'.