

# Anti-REN / Renin 1 Antibody (aa131-406, clone 2F10)

Mouse Anti Human Monoclonal Antibody  
Catalog # ALS17289

## Product Information

---

<b>Application</b>	WB, IHC-P
<b>Primary Accession</b>	<a href="#">P00797</a>
<b>Predicted</b>	Human
<b>Host</b>	Mouse
<b>Clonality</b>	Monoclonal
<b>Isotype</b>	IgG1
<b>Clone Names</b>	2F10
<b>Calculated MW</b>	45057
<b>Concentration (mg/ml)</b>	1 mg/ml

## Additional Information

---

<b>Gene ID</b>	5972
<b>Alias Symbol</b>	REN
<b>Other Names</b>	REN, Angiotensin-forming enzyme, Angiotensinogenase, HNFJ2, RENAA, Renin precursor, renal, Renin
<b>Target/Specificity</b>	Human REN / Renin 1
<b>Reconstitution &amp; Storage</b>	PBS, pH 7.3, 1% BSA, 50% glycerol, 0.02% sodium azide Store at -20°C. Minimize freezing and thawing.
<b>Precautions</b>	Anti-REN / Renin 1 Antibody (aa131-406, clone 2F10) is for research use only and not for use in diagnostic or therapeutic procedures.

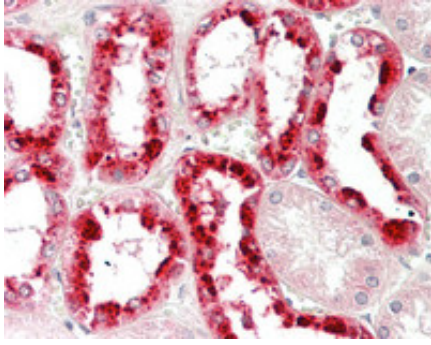
## Protein Information

---

<b>Name</b>	REN
<b>Function</b>	Renin is a highly specific endopeptidase, whose only known function is to generate angiotensin I from angiotensinogen in the plasma, initiating a cascade of reactions that produce an elevation of blood pressure and increased sodium retention by the kidney.
<b>Cellular Location</b>	Secreted. Membrane. Note=Associated to membranes via binding to ATP6AP2.

## Images

---



Human Kidney: Formalin-Fixed, Paraffin-Embedded (FFPE)

Please note: All products are 'FOR RESEARCH USE ONLY. NOT FOR USE IN DIAGNOSTIC OR THERAPEUTIC PROCEDURES'.