

# Anti-CO-029 / TSPAN8 Antibody (aa110-160)

Rabbit Anti Human Polyclonal Antibody

Catalog # ALS17298

## Product Information

<b>Application</b>	WB, IHC-P
<b>Primary Accession</b>	<a href="#">P19075</a>
<b>Predicted</b>	Human, Mouse, Rat
<b>Host</b>	Rabbit
<b>Clonality</b>	Polyclonal
<b>Calculated MW</b>	26044

## Additional Information

<b>Gene ID</b>	7103
<b>Alias Symbol</b>	TSPAN8
<b>Other Names</b>	TSPAN8, CO-029, TM4SF3, Tspan-8, Tetraspanin 8, Tetraspanin-8
<b>Target/Specificity</b>	Human CO-029 / TSPAN8
<b>Reconstitution &amp; Storage</b>	PBS, pH 7.2, 0.05% sodium azide Store at 4°C short term. Aliquot and store at -20°C long term. Avoid freeze-thaw cycles.
<b>Precautions</b>	Anti-CO-029 / TSPAN8 Antibody (aa110-160) is for research use only and not for use in diagnostic or therapeutic procedures.

## Protein Information

<b>Name</b>	TSPAN8
<b>Synonyms</b>	TM4SF3
<b>Function</b>	Structural component of specialized membrane microdomains known as tetraspanin-enriched microdomains (TERMs), which act as platforms for receptor clustering and signaling (PubMed: <a href="#">27180357</a> , PubMed: <a href="#">36078095</a> ). Participates thereby in diverse biological functions such as cell signal transduction, migration and protein trafficking (PubMed: <a href="#">25761241</a> ). Promotes ADAM17-mediated TNF-alpha processing through recruitment of ADAM17 to tetraspanin-enriched micro-domains (TEMs) (PubMed: <a href="#">36078095</a> ). Forms a complex with RICTOR and integrin alpha3/ITGA3 to mediate mTORC2 activation and AKT1 phosphorylation leading to cell migration (PubMed: <a href="#">25761241</a> ). Reduces apoptosis and autophagy induced by high glucose levels through forming a complex with mTOR and RICTOR (PubMed: <a href="#">35904232</a> ). Contributes to the maintenance of intestinal epithelial barrier and plays a role in the regulation of intestine inflammation by switching interferon gamma receptor 1/IFNGR1 from clathrin-dependent to

lipid raft-dependent endocytosis route to limit STAT1 activation magnitude and duration (PubMed:[37204469](#)). Acts as a modulator of the endothelin axis by associating with endothelin converting enzyme ECE1 and regulating its activity of conversion of the endothelin-1 precursor to endothelin (PubMed:[37835445](#)).

**Cellular Location**

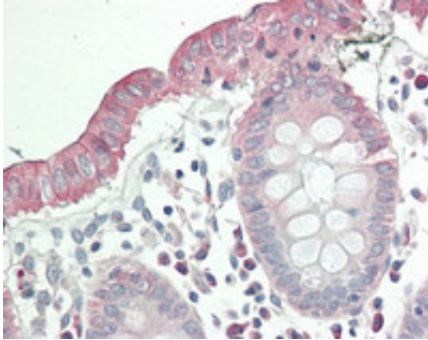
Cell membrane; Multi-pass membrane protein

**Tissue Location**

Gastric, colon, rectal, and pancreatic carcinomas.

## Images

---



Human Colon: Formalin-Fixed, Paraffin-Embedded (FFPE)

Please note: All products are 'FOR RESEARCH USE ONLY. NOT FOR USE IN DIAGNOSTIC OR THERAPEUTIC PROCEDURES'.