

# Anti-SLC36A2 Antibody

Rabbit Anti Human Polyclonal Antibody  
Catalog # ALS17306

## Product Information

---

<b>Application</b>	WB, IHC-P, E
<b>Primary Accession</b>	<a href="#">Q495M3</a>
<b>Predicted</b>	Human
<b>Host</b>	Rabbit
<b>Clonality</b>	Polyclonal
<b>Isotype</b>	IgG
<b>Calculated MW</b>	53216
<b>Concentration (mg/ml)</b>	1 mg/ml

## Additional Information

---

<b>Gene ID</b>	153201
<b>Alias Symbol</b>	SLC36A2
<b>Other Names</b>	SLC36A2, PAT2, Tramdorin-1, TRAMD1, Tramdorin
<b>Target/Specificity</b>	SLC36A2 antibody is human specific. SLC36A2 is predicted to not cross-react with other members of the SLC36 protein family.
<b>Reconstitution &amp; Storage</b>	PBS, 0.02% sodium azide. Store at 4°C for three months and -20°C, stable for up to one year. Avoid repeated freeze thaw cycles.
<b>Precautions</b>	Anti-SLC36A2 Antibody is for research use only and not for use in diagnostic or therapeutic procedures.

## Protein Information

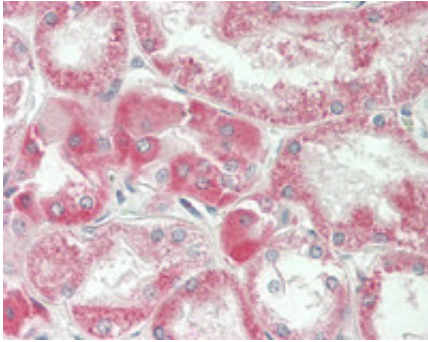
---

<b>Name</b>	SLC36A2 ( <a href="#">HGNC:18762</a> )
<b>Function</b>	Electrogenic proton/amino acid symporter with a high selectivity for the small side chains amino acids glycine, alanine and proline, where both L- and D-enantiomers are transported. Extension of the backbone length, as in beta-alanine and 4-aminobutanoate or methylation of the amino group, as in sarcosine and N,N- dimethylglycine, are also tolerated but decrease transport efficiency. A free carboxyl group is preferred.
<b>Cellular Location</b>	Cell membrane; Multi-pass membrane protein. Endoplasmic reticulum membrane {ECO:0000250 UniProtKB:Q8BHK3}. Recycling endosome membrane {ECO:0000250 UniProtKB:Q8BHK3}
<b>Tissue Location</b>	Abundantly expressed in kidney and muscle. Expressed in the S1 segment of

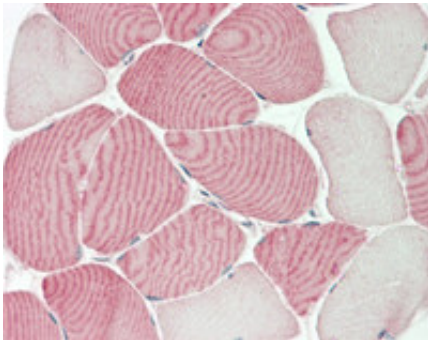
the proximal tubule close to the glomerulus.

## Images

---



Human Kidney: Formalin-Fixed, Paraffin-Embedded (FFPE)



Human Skeletal Muscle: Formalin-Fixed,  
Paraffin-Embedded (FFPE)

Please note: All products are 'FOR RESEARCH USE ONLY. NOT FOR USE IN DIAGNOSTIC OR THERAPEUTIC PROCEDURES'.