

Anti-Neurofibromin / NF1 Antibody (aa1526-1575)

Rabbit Anti Human Polyclonal Antibody

Catalog # ALS17316

Product Information

| | |
|--------------------------|------------------------|
| Application | WB, IHC-P, E |
| Primary Accession | P21359 |
| Predicted | Human, Mouse, Rat |
| Host | Rabbit |
| Clonality | Polyclonal |
| Isotype | IgG |
| Calculated MW | 319372 |

Additional Information

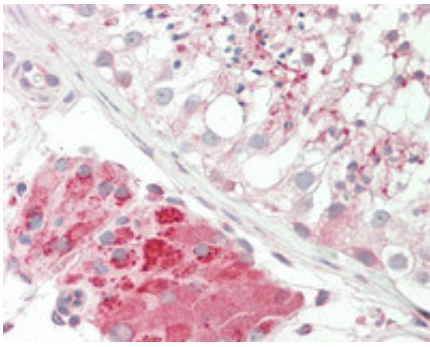
| | |
|-------------------------------------|---|
| Gene ID | 4763 |
| Alias Symbol | NF1 |
| Other Names | NF1, VRNF, Neurofibromin 1, NFNS, WSS, Neurofibromin |
| Target/Specificity | NF1 Antibodyantibody detects endogenous levels of NF1. |
| Reconstitution & Storage | PBS, pH 7.4, 150 mM sodium chloride, 0.02% sodium azide, 50% glycerol Store at -20°C. |
| Precautions | Anti-Neurofibromin / NF1 Antibody (aa1526-1575) is for research use only and not for use in diagnostic or therapeutic procedures. |

Protein Information

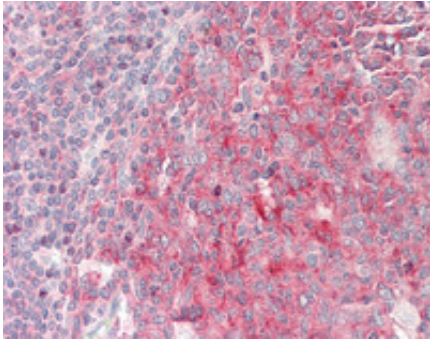
| | |
|--------------------------|---|
| Name | NF1 |
| Function | Stimulates the GTPase activity of Ras. NF1 shows greater affinity for Ras GAP, but lower specific activity. May be a regulator of Ras activity. |
| Cellular Location | Nucleus. Nucleus, nucleolus. Cell membrane |
| Tissue Location | Detected in brain, peripheral nerve, lung, colon and muscle. |

Images

Human Testis: Formalin-Fixed, Paraffin-Embedded (FFPE)



Human Tonsil: Formalin-Fixed, Paraffin-Embedded (FFPE)



Please note: All products are 'FOR RESEARCH USE ONLY. NOT FOR USE IN DIAGNOSTIC OR THERAPEUTIC PROCEDURES'.