

# Anti-Adiponectin Antibody (aa19-244, clone 2C9)

Mouse Anti Human Monoclonal Antibody  
Catalog # ALS17318

## Product Information

---

<b>Application</b>	WB, IHC-P
<b>Primary Accession</b>	<a href="#">Q15848</a>
<b>Predicted</b>	Human
<b>Host</b>	Mouse
<b>Clonality</b>	Monoclonal
<b>Isotype</b>	IgG1
<b>Clone Names</b>	2C9
<b>Calculated MW</b>	26414
<b>Concentration (mg/ml)</b>	1 mg/ml

## Additional Information

---

<b>Gene ID</b>	9370
<b>Alias Symbol</b>	ADIPOQ
<b>Other Names</b>	ADIPOQ, Adiponectin, ADPN, ACDC, ADIPQTL1, APM-1, APM1, ACRP30, Gelatin-binding protein 28, GBP28, Gelatin-binding protein
<b>Target/Specificity</b>	Human Adiponectin
<b>Reconstitution &amp; Storage</b>	PBS, pH 7.3, 1% BSA, 50% glycerol, 0.02% sodium azide Store at -20°C. Minimize freezing and thawing.
<b>Precautions</b>	Anti-Adiponectin Antibody (aa19-244, clone 2C9) is for research use only and not for use in diagnostic or therapeutic procedures.

## Protein Information

---

<b>Name</b>	ADIPOQ
<b>Function</b>	Important adipokine involved in the control of fat metabolism and insulin sensitivity, with direct anti-diabetic, anti-atherogenic and anti-inflammatory activities. Stimulates AMPK phosphorylation and activation in the liver and the skeletal muscle, enhancing glucose utilization and fatty-acid combustion. Antagonizes TNF by negatively regulating its expression in various tissues such as liver and macrophages, and also by counteracting its effects. Inhibits endothelial NF-kappa-B signaling through a cAMP-dependent pathway. May play a role in cell growth, angiogenesis and tissue remodeling by binding and sequestering various growth factors with distinct binding affinities, depending on the type of complex, LMW, MMW or HMW.

**Cellular Location**

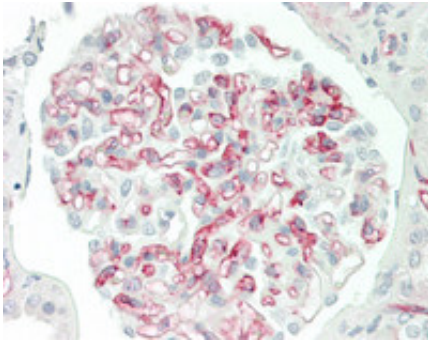
Secreted.

**Tissue Location**

Synthesized exclusively by adipocytes and secreted into plasma.

## Images

---



Human Kidney: Formalin-Fixed, Paraffin-Embedded (FFPE)

Please note: All products are 'FOR RESEARCH USE ONLY. NOT FOR USE IN DIAGNOSTIC OR THERAPEUTIC PROCEDURES'.