

Anti-FKSG80 / GPR81 Antibody (Cytoplasmic Domain)

Rabbit Anti Human Polyclonal Antibody
Catalog # ALS17319

Product Information

Application	IHC-P
Primary Accession	Q9BXC0
Predicted	Human, Monkey
Host	Rabbit
Clonality	Polyclonal
Calculated MW	39295
Concentration (mg/ml)	1 mg/ml

Additional Information

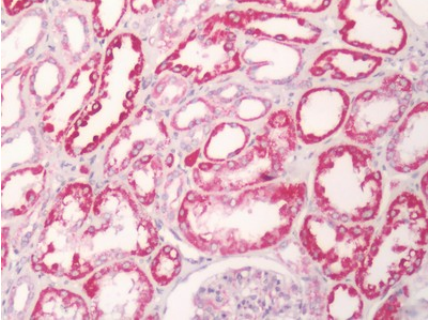
Gene ID	27198
Alias Symbol Other Names	HCAR1 HCAR1, FKSG80, G protein-coupled receptor 81, G-protein coupled receptor 104, G protein-coupled receptor 104, G-protein coupled receptor 81, GPR81, GPR104, LACR1, HCA1, TA-GPCR, Lactate receptor 1
Target/Specificity	Human GPR81. BLAST analysis of the peptide immunogen showed no homology with other human proteins.
Reconstitution & Storage	PBS, less than 0.1% sodium azide. Aliquot and store undiluted at -20°C or below for up to 1 year. Can be stored undiluted at 4°C for up to 1 month. Avoid freeze thaw cycles.
Precautions	Anti-FKSG80 / GPR81 Antibody (Cytoplasmic Domain) is for research use only and not for use in diagnostic or therapeutic procedures.

Protein Information

Name	HCAR1
Synonyms	GPR104, GPR81, HCA1
Function	Acts as a receptor for L-lactate and mediates its anti- lipolytic effect through a G(i)-protein-mediated pathway.
Cellular Location	Cell membrane; Multi-pass membrane protein
Tissue Location	Expressed abundantly in brown and white fat. It also detectable at lower levels in liver, kidney, skeletal muscle, brain and pituitary. Not detected in frontal, temporal and occipital lobes of the cortex, basal forebrain, caudate

nucleus, nucleus accumbens and hippocampus.

Images



Human Kidney: Formalin-Fixed, Paraffin-Embedded (FFPE)

Please note: All products are 'FOR RESEARCH USE ONLY. NOT FOR USE IN DIAGNOSTIC OR THERAPEUTIC PROCEDURES'.