

# Anti-ARF4 Antibody (aa2-180)

Rabbit Anti Human Polyclonal Antibody  
Catalog # ALS17325

## Product Information

---

<b>Application</b>	WB, IHC-P, E
<b>Primary Accession</b>	<a href="#">P18085</a>
<b>Predicted</b>	Human
<b>Host</b>	Rabbit
<b>Clonality</b>	Polyclonal
<b>Calculated MW</b>	20511
<b>Concentration (mg/ml)</b>	1 mg/ml

## Additional Information

---

<b>Gene ID</b>	378
<b>Alias Symbol</b>	ARF4
<b>Other Names</b>	ARF4, ARF2, ADP-ribosylation factor 2, ADP-ribosylation factor 4
<b>Target/Specificity</b>	Human ARF4.
<b>Reconstitution &amp; Storage</b>	PBS, pH 7.4, 0.02% sodium azide Store at -20°C for up to one year.
<b>Precautions</b>	Anti-ARF4 Antibody (aa2-180) is for research use only and not for use in diagnostic or therapeutic procedures.

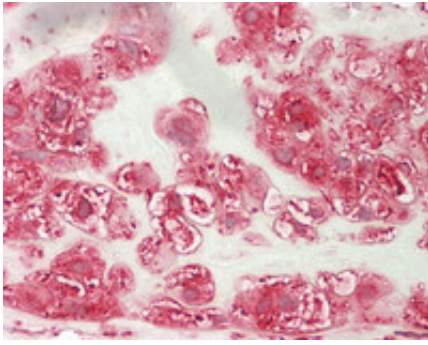
## Protein Information

---

<b>Name</b>	ARF4
<b>Synonyms</b>	ARF2
<b>Function</b>	GTP-binding protein that functions as an allosteric activator of the cholera toxin catalytic subunit, an ADP-ribosyltransferase. Involved in protein trafficking; may modulate vesicle budding and uncoating within the Golgi apparatus. Part of the ciliary targeting complex containing Rab11, ASAP1, Rabin8/RAB3IP, RAB11FIP3 and ARF4, which direct preciliary vesicle trafficking to mother centriole and ciliogenesis initiation (PubMed: <a href="#">25673879</a> ).
<b>Cellular Location</b>	Golgi apparatus. Membrane; Lipid-anchor

## Images

---



Human Placenta: Formalin-Fixed, Paraffin-Embedded (FFPE)

Please note: All products are 'FOR RESEARCH USE ONLY. NOT FOR USE IN DIAGNOSTIC OR THERAPEUTIC PROCEDURES'.