

Anti-HPX / Hemopexin Antibody

Goat Anti Human Polyclonal Antibody
Catalog # ALS17333

Product Information

Application	WB, IHC-P, E, IP, ID, FC
Primary Accession	P02790
Predicted	Human
Host	Goat
Clonality	Polyclonal
Calculated MW	51676
Concentration (mg/ml)	1 mg/ml

Additional Information

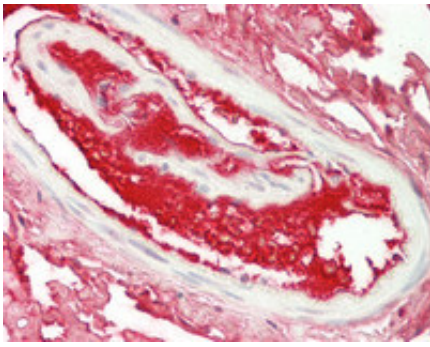
Gene ID	3263
Alias Symbol	HPX
Other Names	HPX, Hemopexin, HX, Beta-1B-glycoprotein
Target/Specificity	Human Hemopexin.
Reconstitution & Storage	10 mM sodium phosphate, 0.15 M sodium chloride, pH 7.2, 0.05% sodium azide. Store at 2-8°C
Precautions	Anti-HPX / Hemopexin Antibody is for research use only and not for use in diagnostic or therapeutic procedures.

Protein Information

Name	HPX
Function	Binds heme and transports it to the liver for breakdown and iron recovery, after which the free hemopexin returns to the circulation.
Cellular Location	Secreted.
Tissue Location	Expressed by the liver and secreted in plasma.

Images

Human Small Intestine, Vessel: Formalin-Fixed,
Paraffin-Embedded (FFPE)



Please note: All products are 'FOR RESEARCH USE ONLY. NOT FOR USE IN DIAGNOSTIC OR THERAPEUTIC PROCEDURES'.