

# DRP-2 Antibody

Unpurified Mouse Monoclonal Antibody (Mab)

Catalog # AM1131a

## Product Information

---

<b>Application</b>	WB, E
<b>Primary Accession</b>	<a href="#">Q16555</a>
<b>Other Accession</b>	<a href="#">P47942</a> , <a href="#">O08553</a> , <a href="#">Q90635</a> , <a href="#">O02675</a>
<b>Reactivity</b>	Human, Rat, Mouse
<b>Predicted</b>	Rat, Chicken, Bovine
<b>Host</b>	Mouse
<b>Clonality</b>	Monoclonal
<b>Isotype</b>	IgG2b
<b>Clone Names</b>	33CT11.7.6
<b>Calculated MW</b>	62294
<b>Antigen Region</b>	463-492

## Additional Information

---

<b>Gene ID</b>	1808
<b>Other Names</b>	Dihydropyrimidinase-related protein 2, DRP-2, Collapsin response mediator protein 2, CRMP-2, N2A3, Unc-33-like phosphoprotein 2, ULIP-2, DPYSL2, CRMP2, ULIP2
<b>Target/Specificity</b>	This DRP-2 antibody is generated from mice immunized with a KLH conjugated synthetic peptide between 463-492 amino acids from human DRP-2.
<b>Dilution</b>	WB~~1:500~1000 E~~Use at an assay dependent concentration.
<b>Format</b>	Purified monoclonal antibody supplied in PBS with 0.09% (W/V) sodium azide. This antibody is purified through a protein G column, followed by dialysis against PBS.
<b>Storage</b>	Maintain refrigerated at 2-8°C for up to 2 weeks. For long term storage store at -20°C in small aliquots to prevent freeze-thaw cycles.
<b>Precautions</b>	DRP-2 Antibody is for research use only and not for use in diagnostic or therapeutic procedures.

## Protein Information

---

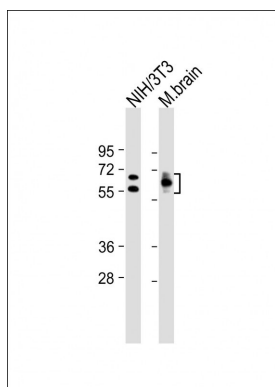
<b>Name</b>	DPYSL2
<b>Synonyms</b>	CRMP2, ULIP2

<b>Function</b>	Plays a role in neuronal development and polarity, as well as in axon growth and guidance, neuronal growth cone collapse and cell migration. Necessary for signaling by class 3 semaphorins and subsequent remodeling of the cytoskeleton. May play a role in endocytosis.
<b>Cellular Location</b>	Cytoplasm, cytosol. Cytoplasm, cytoskeleton. Membrane. Note=Tightly but non-covalently associated with membranes
<b>Tissue Location</b>	Ubiquitous.

## References

A two-stage case-control association study of the dihydropyrimidinase-like 2 gene (DPYSL2) with schizophrenia in Japanese subjects. Koide T, et al. J Hum Genet, 2010 Jul. PMID 20414250. Sex-specific proteome differences in the anterior cingulate cortex of schizophrenia. Martins-de-Souza D, et al. J Psychiatr Res, 2010 Apr 8. PMID 20381070. Personalized smoking cessation: interactions between nicotine dose, dependence and quit-success genotype score. Rose JE, et al. Mol Med, 2010 Jul-Aug. PMID 20379614. Collapsin response mediator protein-2 regulates neurite formation by modulating tubulin GTPase activity. Chae YC, et al. Cell Signal, 2009 Dec. PMID 19666111. CRMP-2 directly binds to cytoplasmic dynein and interferes with its activity. Arimura N, et al. J Neurochem, 2009 Oct. PMID 19659462.

## Images



All lanes : Anti-DRP-2 Antibody at 1:8000 dilution Lane 1: NIH/3T3 whole cell lysate Lane 2: Mouse brain lysate Lysates/proteins at 20 µg per lane. Secondary Goat Anti-mouse IgG, (H+L), Peroxidase conjugated at 1/10000 dilution. Predicted band size : 62, 58 kDa Blocking/Dilution buffer: 5% NFDM/TBST.

Please note: All products are 'FOR RESEARCH USE ONLY. NOT FOR USE IN DIAGNOSTIC OR THERAPEUTIC PROCEDURES'.