

AFP Antibody (N-term)

Mouse Monoclonal Antibody (Mab)

Catalog # AM1835a

Product Information

Application	WB, E
Primary Accession	P02771
Other Accession	NP_001125.1
Reactivity	Human, Rat, Mouse
Host	Mouse
Clonality	Monoclonal
Isotype	Mouse IgM
Clone Names	143CT50.11.8
Calculated MW	68678
Antigen Region	56-85

Additional Information

Gene ID	174
Other Names	Alpha-fetoprotein, Alpha-1-fetoprotein, Alpha-fetoglobulin, AFP, HPAFP
Target/Specificity	This AFP antibody is generated from mice immunized with a KLH conjugated synthetic peptide between 56-85 amino acids from the N-terminal region of human AFP.
Dilution	WB~~1:100~500 E~~Use at an assay dependent concentration.
Format	Purified monoclonal antibody supplied in PBS with 0.09% (W/V) sodium azide. This antibody is purified through a protein G column, followed by dialysis against PBS.
Storage	Maintain refrigerated at 2-8°C for up to 2 weeks. For long term storage store at -20°C in small aliquots to prevent freeze-thaw cycles.
Precautions	AFP Antibody (N-term) is for research use only and not for use in diagnostic or therapeutic procedures.

Protein Information

Name	AFP
Synonyms	HPAFP
Function	Binds copper, nickel, and fatty acids as well as, and bilirubin less well than, serum albumin. Only a small percentage (less than 2%) of the human AFP

shows estrogen-binding properties.

Cellular Location

Secreted.

Tissue Location

Plasma. Synthesized by the fetal liver and yolk sac

Background

alpha 1 Fetoprotein encodes alpha-fetoprotein, a major plasma protein produced by the yolk sac and the liver during fetal life. Alpha-fetoprotein expression in adults is often associated with hepatoma or teratoma. However, hereditary persistence of alpha-fetoprotein may also be found in individuals with no obvious pathology. The protein is thought to be the fetal counterpart of serum albumin, and the alpha-fetoprotein and albumin genes are present in tandem in the same transcriptional orientation on chromosome 4. Alpha-fetoprotein is found in monomeric as well as dimeric and trimeric forms, and binds copper, nickel, fatty acids and bilirubin. The level of alpha-fetoprotein in amniotic fluid is used to measure renal loss of protein to screen for spina bifida and anencephaly.

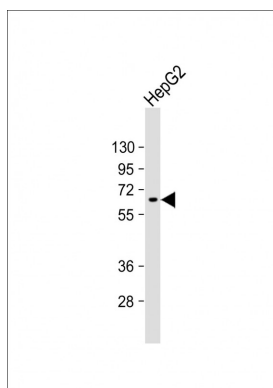
References

Suriapranata, I.M., et al. Clin. Chim. Acta 411 (5-6), 351-358 (2010)

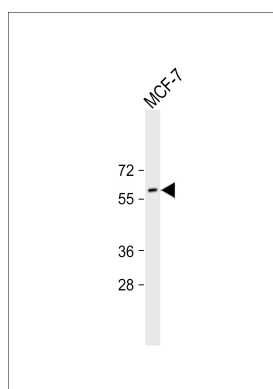
Vibert, E., et al. Am. J. Transplant. 10(1):129-137(2010)

Potapovich, A.I., et al. Br. J. Pharmacol. 158(5):1236-1247(2009)

Images



Anti- at 1:1000 dilution + HepG2 whole cell lysate
Lysates/proteins at 20 µg per lane. Secondary Goat
Anti-mouse IgM, (H+L), Peroxidase conjugated at 1/10000
dilution. Predicted band size : 69 kDa Blocking/Dilution
buffer: 5% NFDM/TBST.



Anti-AFP Antibody (N-term) at 1:31.25 dilution + MCF-7
whole cell lysate Secondary Goat Anti-mouse IgM,
(H+L), Peroxidase conjugated at 1/10000 dilution.
Predicted band size : 68678 Da Blocking/Dilution buffer:
5% NFDM/TBST.

Please note: All products are 'FOR RESEARCH USE ONLY. NOT FOR USE IN DIAGNOSTIC OR THERAPEUTIC PROCEDURES'.